

GLAZING & ASSOCIATED PRODUCTS

*Insulated Glass Unit Bonding / Weather Sealants & Membranes /
Silicone Structural Bonding / Complimentary Mastics & Adhesives / Fire Protection*

RPM International Inc.

\$5.6 Billion Turnover

156 Manufacturing facilities in 26 countries

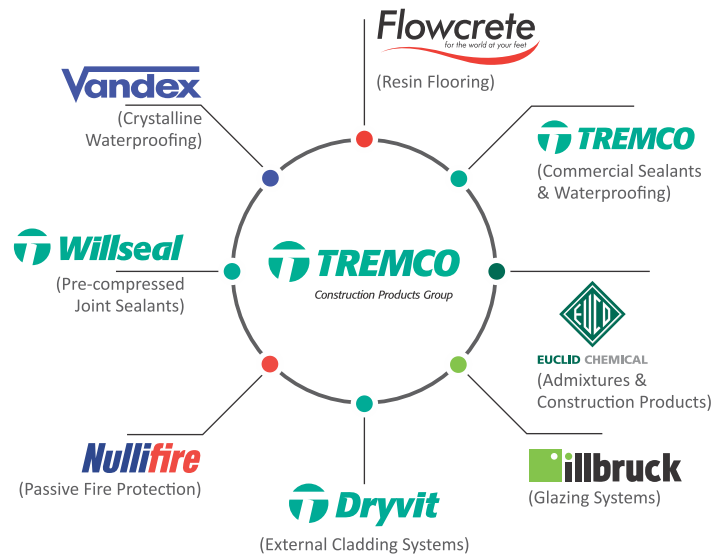
Sales in 170 countries & Listed in NYSE

175 acquisition in 30 years

Tremco Construction Products Group (CPG) India is a market leader in the manufacture of Construction Chemical products as well as other specialist construction products & coatings.

Tremco CPG India belongs to an wider global Tremco Construction Products Group company (an RPM Inc. division) headquartered in Cleveland, Ohio (USA).

Tremco Construction Products group is a powerful union of some of the world's most trusted & leading chemical and coatings technology brands owned by RPM Inc.



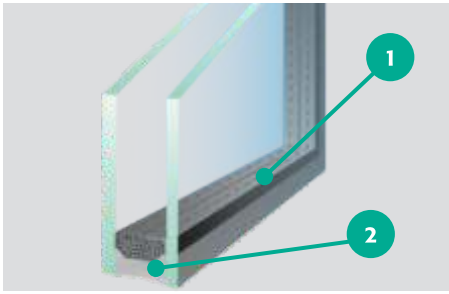
Since 1928, Tremco has pioneered superior weatherproofing solutions while illbruck has been the leading manufacturer of innovative, high-performance sealants and installation systems for pre-fabricated construction elements and for window and door applications.

With a fully-integrated line of glazing sealants, compatible gaskets, foams, membranes, adhesives, tapes, spacers, setting blocks and window-to-wall interfaces, we eliminate the guesswork. This tested and fully integrated approach ensures the adhesion, weatherability and durability of the total glazing system for peace of mind.

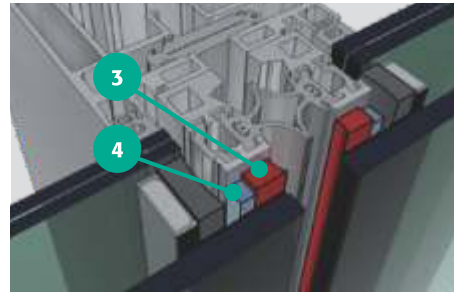


illbruck products ensure sustainable, top quality solutions. They meet all Government requirements, help to lower energy consumption and contribute to a healthy living environment. The products are regularly checked by independent materials testing institutes for performance, durability, safety and adherence to low emission standards.

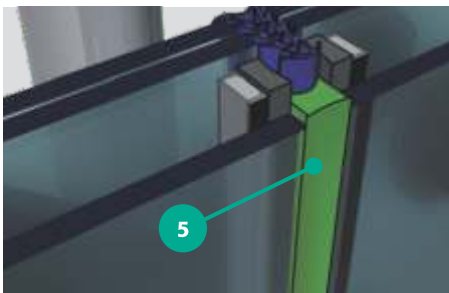
PRODUCT SELECTOR



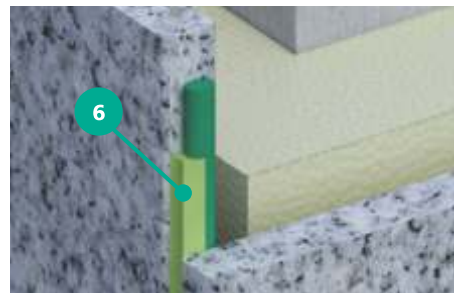
1. Tremco JS680
2. Tremco JS562
Tremco JS442
Tremco JS443



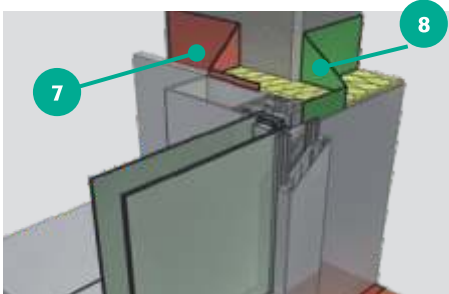
3. Tremco SG200 / Proglaze II
Tremco SG300
Proglaze SSG
4. Tremco SG635



5. Tremco SG555
Tremco SG556
Tremco SG557
Tremco SG558



6. Tremco SG556
Tremco SG557
illbruck SP523



7. illbruck ME210
8. illbruck ME220



9. illbruck TP600

Tremco CPG understands that the correct selection of structural sealants and glazing components is crucial for a safe and leak-free building.



With all of the variables in play on today's projects, it isn't about a good-better-best approach anymore, but about using the right approach to address the application.

There are specific sets of jobsite conditions where a sealant may be sufficient to make the connection. In other instances, extreme movement of the window or curtainwall may occur requiring high-movement connection. Tremco offers a variety of tested, proven transition solutions that can accommodate almost any design from standardised to highly specialised.

SILICONE STRUCTURAL & WEATHER SEAL SEALANTS

Silicone sealants for structural glazing applications and weather sealing curtainwalls, façades and joints.

Tremco takes the guesswork out of glazing system design and assures the adhesion, weatherability and durability of the system. Tremco also provides compatible perimeter caulking, weatherproofing and transitions from the window and/or curtain wall system to the wall assembly.

Tremco SG200 / Proglaze II

Two Component Silicone Sealant

A high performance, UV resistant, silicone sealant, designed especially for structural bonding of single panes or IG units to a structural frame in order to support the transfer of dynamic wind load. Meets ETAG002 requirements.

Tremco SG300

High Performance Silicone Sealant

A versatile, one part silicone sealant that is suitable for structural bonding applications. Tremco SG300 meets requirements such as ASTM C-920 Type S Grade NS Class 25.

Tremco SG555

Premium Grade Non-Staining Silicone Weather Seal

A one part sealant for projects where high joint movement is anticipated such as structurally glazed curtainwall or aluminium cladding. Can also be used for expansion joints and external perimeter joints with a movement accommodation of $\pm 50\%$.

Tremco SG556

General Purpose Silicone Weather Seal

A one part neutral curing medium modulus silicone sealant with excellent mechanical resistance, weathering capabilities and good adhesion to most porous/non-porous substrates with a movement accommodation of $\pm 30\%$.

Tremco SG557

Non-Staining Silicone Weather Seal

A single component silicone with good mechanical resistance and adhesion to most common porous and non-porous building substrates with a movement accommodation of $\pm 25\%$.

Tremco SG558

General Purpose Silicone Weather Seal

A one part, neutral cure silicone for use in applications where a high degree of movement is anticipated such as curtain walls, façades, perimeter joints and expansion joints. Having a movement accommodation of $\pm 50\%$.

BONDING FOR INSULATION GLASS UNITS

Sealants & glazing tapes developed to compliment the production of Insulation Glass units and structural glazing systems.

Tremco JS680

Butyl Inner Sealant

A primary sealant for dual seal IG units that provides the main moisture vapour barrier and is fully compatible with Tremco secondary sealants. It has excellent adhesion to glass, aluminium, plastic and galvanised steel spacer bars.

Tremco JS562

Two Component Silicone Sealant

A two part silicone developed as a secondary sealant for insulating glass (IG) unit manufacture in structural silicone glazing (SSG) applications and other critical areas requiring outstanding UV resistance.

Tremco SG635

Structural Glazing Tape

An open cell, high density PVC foam tape with a micro-cellular structure. Tremco SG635 has been specially developed to be used as a compatible spacer for structural glazing systems.



ILLBRUCK COMPLEMENTARY MASTICS & ADHESIVES

Certified solutions for sealing, bonding and weatherproofing window and façade systems.

Sustainable, high quality solutions from illbruck help to lower energy consumption and contribute to a healthy living environment. The products are regularly checked by independent materials testing institutes for performance, durability, safety and adherence to low emission standards.

illbruck SP523

Hybrid Facade Sealant

SP523 is recommended for construction sealing as joints in façades, rainscreens and curtain walls, perimeter joints around windows, doors and high movement joints.

illbruck CT113

EPDM Membrane Adhesive

CT113 is a viscous liquid adhesive developed for the bonding of ME220 EPDM membranes, particularly in façade applications. CT113 is compatible with surfaces such as wood, metal, masonry and other building materials.

illbruck OT015

High Tack Membrane Adhesive

OT015 is used for bonding ME220 Elastomeric EPDM Membrane to itself & to typical construction substrates such as aluminium, metal, zinc plated metal, wood, PVC-U, and other non-porous materials.



ILLBRUCK WEATHER SEALING SOLUTIONS

illbruck TP600

Compriband 600 / illmod 600

TP600 is a soft and flexible open cell polyurethane foam tape, impregnated with an acrylic based, UV stabilised resin. The resin is water repellent and contains a fire retardant.



illbruck ME220

EPDM Membrane

ME220 EPDM membrane is used for weather sealing the connecting joint between a window or a façade & an adjacent structure, or to provide an internal air-tight barrier in a similar detail.

illbruck ME500

Intelligent, Flexible Window

Perimeter Membrane ME500-E is a breathable, flexible, polyethylene copolymer film comprising of non-woven fleece fabric, as well as acrylic self-adhesive and butyl adhesive strips for location to frame and wall.

illbruck ME501

Intelligent Window & Curtainwall

Perimeter Membrane A breathable, flexible, high strength, tear resistant membrane made from polyethylene copolymer film with nonwoven fabric. It can be applied before or after window installation. Also available with gasket options for fixing to window profiles.

Flowcrete
For the world in your hand

 **TREMCO**



EUCLID CHEMICAL

Vandex

 **Millbruck**

 **Dryvit**

Nullifire

 **Willseal**

 **TREMCO**
Construction Products Group

Tremco CPG (India) Private Limited

(formerly known as "Flowcrete India Private Limited")

"Ganesh Tower", Door No.B-1, 1st floor, 1st Avenue, Ashok Nagar, Chennai - 600 083. Tamilnadu, India.
T. +91 44 4017 6600 | F. +91 44 4202 9832 | india@tremcocpg.com | www.tremcocpg-india.in