

# Products Summary Guide



POWERFUL UNION OF THE MOST TRUSTED GLOBAL BRANDS

# INDEX

## Concrete Products

|                           |   |
|---------------------------|---|
| Concrete Admixtures       | 2 |
| Curing & Sealing concrete | 6 |
| Form Release Agents       | 8 |
| Miscellaneous Products    | 8 |

## Sealants

|                                      |   |
|--------------------------------------|---|
| Expansion Jointing system & sealants | 9 |
|--------------------------------------|---|

## Waterproofing & Roofing

|  |    |
|--|----|
| Cement Polymer slurry applied coatings | 9  |
| Vandex-Crystalline Waterproofing       | 10 |
| Below Ground Waterproofing Membrane    | 11 |
| Cold Fluid applied Waterproofing       | 11 |
| Spray Applied Waterproofing            | 12 |
| Construction Jointing system           | 13 |
| TREmply Built up Roofing system        | 13 |

## Flooring

|   |    |
|---|----|
| Dry Shake Floor Hardeners                     | 14 |
| Liquid Densifiers                             | 14 |
| Penetrating Sealers                           | 15 |
| Industrial Resin flooring                     | 16 |
| Commercial Resin Flooring                     | 18 |
| Car park Deck coating                         | 25 |
| Wall coatings                                 | 26 |
| Cementitious Sub-floors & Polishable Overlays | 26 |

## Repair & Rehabilitation

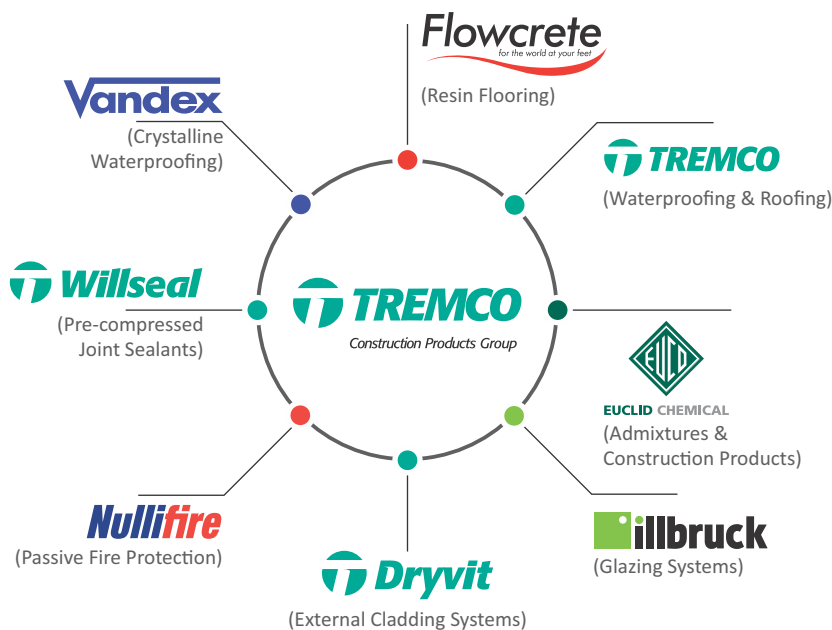
|                            |    |
|----------------------------|----|
| Bonding Agents & Adhesives | 27 |
| Grouts                     | 28 |
| Concrete Repair            | 30 |
| Coatings                   | 32 |

Tremco Construction Products Group (CPG) India is a market leader in the manufacture of Construction Chemical products including seamless industrial and commercial resin flooring solution, waterproofing systems, roofing with insulation, systems for joints & durable sealants, admixtures, repair solution, fibres as well as other specialist construction products & coatings.

Tremco CPG India headquartered in Chennai serves expanding business opportunities across the Indian sub-continent's construction chemical Industry. Tremco CPG India belongs to an wider global Tremco Construction Products Group company (an RPM Inc. division) headquartered in Cleveland, Ohio (USA).

| RPM International Inc.                  |  |
|---|--|
| \$5.6 Billion Turnover                  | 156 Manufacturing facilities in 26 countries |
| Sales in 170 countries & Listed in NYSE | 175 acquisition in 30 years                  |

Tremco Construction Products group is a powerful union of some of the world's most trusted & leading chemical and coatings technology brands owned by RPM Inc.



## Why Tremco CPG?



### Speeds up construction

Lightweight, fast-curing & prefabricated products mean less occupant disruption, faster return to service, less revenue lost, and no call-backs.



### Stronger & More Resilient

Our systems are designed for maximum durability, many with service lives far surpassing that of competing systems.



### Our Services

Specification, technical detailing & onsite support. Global R&D support on product development and accredited / certified by leading industrial bodies.



### Single Point of Contact

Products are tested for compatibility and backed by system warranties - all through a single point of contact, with a single point of responsibility.



### Any Look you Want

A wide range of colours and finishes for floors, walls, façades and roofs to provide almost unlimited design potential for your building project.



### Impervious to Weather

Products designed for maximum protection from the elements, including above and below ground-level solutions to prevent the ingress of water.

## CONCRETE ADMIXTURES



| Product (Product Description)  | Applications  | Features & Benefits  | Estimation                           |
|--|---|--|--------------------------------------|
| <b>CONCRETE ADMIXTURES</b>   |   |  |                                      |
| <b>Eucon™ NW</b><br>(20 kg & 250 kg)<br>Water reducing, normal set admixture (Confirms to ASTM C 494 Type A and IS 9103)             | <ul style="list-style-type: none"> <li>• General Purpose concrete</li> <li>• Ready mix concrete</li> </ul>  | <ul style="list-style-type: none"> <li>• Provides easier handling and finishing</li> <li>• Increases strength</li> <li>• Provides increased durability</li> <li>• Reduces shrinkage and permeability</li> </ul>                                | 50 ml to 250 ml per 50 kg of cement  |
| <b>Eucon™ 37</b><br>(20 kg & 250 kg)<br>High Range Water Reducer Superplasticizer (Confirms to ASTM C 494 Type F and IS 9103)        | <ul style="list-style-type: none"> <li>• General Purpose concrete</li> <li>• Ready mix concrete</li> <li>• Minimum water content concrete</li> </ul>  | <ul style="list-style-type: none"> <li>• Produces low water content and low water/cement ratio concrete allowing higher strengths</li> <li>• Aids in concrete placement and reduces labor cost</li> </ul>                                      | 200 ml to 700 ml per 50 kg of cement |
| <b>Eucon™ 537</b><br>(20 kg & 250 kg)<br>High Range Water Reducing Retarding Admixture (Confirms to ASTM C 494 Type G and IS 9103)   | <ul style="list-style-type: none"> <li>• General Ready mix concrete</li> <li>• Reinforced concrete</li> <li>• Grades upto M30</li> </ul>              | <ul style="list-style-type: none"> <li>• Produces concrete with controlled delay of slump loss and workability.</li> <li>• Greatly reduces water requirements.</li> <li>• Reduces segregation and bleeding in the plastic concrete.</li> </ul> | 200 ml to 600 ml per 50 kg of cement |
| <b>Eucon™ 550</b><br>(20 kg & 250 kg)<br>High Range Water Reducing Retarding Admixture (Confirms to ASTM C 494 Type G and IS 9103)   | <ul style="list-style-type: none"> <li>• General Ready mix concrete</li> <li>• Reinforced concrete</li> <li>• Grades upto M30</li> </ul>              | <ul style="list-style-type: none"> <li>• Produces concrete with controlled delay of slump loss and workability</li> <li>• Greatly reduces water requirements</li> <li>• Reduces segregation and bleeding in the plastic concrete</li> </ul>    | 200 ml - 600 ml /50 kg of cement.    |
| <b>Eucon™ HC R4</b><br>(20 kg & 220 kg)<br>Water Reducing/Set Retarding Admixture (Confirms to ASTM C 494 Type G and IS 9103)        | <ul style="list-style-type: none"> <li>• General Ready mix concrete</li> <li>• Concrete made with SCM</li> <li>• Grades upto M35</li> </ul>           | <ul style="list-style-type: none"> <li>• Improves workability</li> <li>• Reduces water requirement</li> <li>• Increases compressive strength</li> <li>• Reduces permeability</li> </ul>  | 200ml – 700 ml / 50 kg of cement.    |
| <b>Eucon™ 230</b><br>(20 kg & 220 kg)<br>Water Reducing /Set Retarding Admixture ( Confirms to ASTM C 494 Type G and IS 9103)        | <ul style="list-style-type: none"> <li>• General Ready mix concrete</li> <li>• Concrete made with SCM</li> <li>• Grades upto M35</li> </ul>           | <ul style="list-style-type: none"> <li>• Improves workability</li> <li>• Reduces water requirement</li> <li>• Increases compressive strength</li> <li>• Reduces permeability</li> </ul>  | 200ml – 700ml/50 kg of cement        |
| <b>Eucon™ HC 370</b><br>(20 kg & 220 kg)<br>Mid Range Water Reducing Retarding Admixture (Confirms to ASTM C 494 Type G and IS 9103) | <ul style="list-style-type: none"> <li>• General Ready mix concrete</li> <li>• Concrete made with SCM</li> <li>• High Performance concrete</li> </ul> | <ul style="list-style-type: none"> <li>• Improves workability</li> <li>• Reduces water requirement</li> <li>• Increases compressive strength</li> <li>• Reduces permeability</li> </ul>  | 200ml – 600ml/50 kg of cement        |
| <b>Plastol™ 341</b><br>(20 kg & 220 kg)<br>Mid Range Water Reducing Retarding Admixture (Confirms to ASTM C 494 Type G and IS 9103)  | <ul style="list-style-type: none"> <li>• General Ready mix concrete</li> <li>• Concrete made with SCM</li> <li>• Grades upto M40</li> </ul>           | <ul style="list-style-type: none"> <li>• Improves workability</li> <li>• Reduces water requirement</li> <li>• Improves setting times</li> <li>• Superior slump retention</li> <li>• Increases compressive strength</li> </ul>                  | 200ml – 600 ml/50 kg of cement       |

## CONCRETE ADMIXTURES

| Product (Product Description)  | Applications  | Features & Benefits   | Estimation  |
|--|---|---|---|
| <b>CONCRETE ADMIXTURES</b>   |   |   |   |
| <b>Plastol™ 351</b><br>(20 kg & 220 kg)<br>Mid Range Water Reducing Retarding Admixture (Confirms to ASTM C 494 Type G and IS 9103)                | <ul style="list-style-type: none"> <li>• General Ready mix concrete</li> <li>• High Performance concrete</li> <li>• Grades upto M45</li> </ul>                | <ul style="list-style-type: none"> <li>• Improves workability</li> <li>• Reduces water requirement</li> <li>• Improves setting times</li> <li>• Superior slump retention</li> <li>• Increases compressive strength</li> </ul>                 | 200ml – 700 ml/50 kg of cement                            |
| <b>Plastol™ 3536</b><br>(20 kg & 220 kg)<br>High Range Water Reducing Admixture (Confirms to ASTM C 494 Type G and IS 9103)                        | <ul style="list-style-type: none"> <li>• General Ready mix concrete</li> <li>• High Performance, High strength concrete</li> <li>• Grades upto M60</li> </ul> | <ul style="list-style-type: none"> <li>• Improves workability</li> <li>• Reduces water requirement</li> <li>• Excellent slump retention</li> <li>• Increases all strength</li> <li>• Improves finished appearance</li> </ul>                  | 200ml – 700 ml/50 kg of cement                            |
| <b>Plastol™ 3610</b><br>(20 kg & 220 kg)<br>High Range Water Reducing Admixture (Confirms to ASTM C 494 Type G and IS 9103)                        | <ul style="list-style-type: none"> <li>• Self compacting concrete</li> <li>• High Performance, High strength concrete</li> </ul>                              | <ul style="list-style-type: none"> <li>• Improves workability</li> <li>• Reduces water requirement</li> <li>• Excellent slump retention</li> <li>• Increases all strength</li> <li>• Improves finished appearance in SCC mixes</li> </ul>     | Normal dosage range is 200 ml - 600 ml / 50 kg of cement. |
| <b>Plastol™ 3630</b><br>(20 kg & 220 kg)<br>High Range Water Reducing Admixture (Confirms to ASTM C 494 Type G and IS 9103)                        | <ul style="list-style-type: none"> <li>• Self compacting concrete</li> <li>• High Performance, High strength concrete</li> </ul>                              | <ul style="list-style-type: none"> <li>• Improves workability</li> <li>• Reduces water requirement</li> <li>• Excellent slump retention</li> <li>• Increases all strength</li> <li>• Improves finished appearance in SCC mixes</li> </ul>     | Normal dosage range is 200 ml - 600 ml / 50 kg of cement. |
| <b>Plastol™ K2</b><br>(20 kg & 220 kg)<br>High Range Water Reducing Retarding Admixture (Confirms to ASTM C 494 Type G and IS 9103)                | <ul style="list-style-type: none"> <li>• Precast concrete</li> <li>• High Performance, High strength concrete</li> </ul>                                      | <ul style="list-style-type: none"> <li>• Reduces water requirement</li> <li>• Improves setting times</li> <li>• Increases all strength &amp; durability</li> <li>• Reduces permeability</li> </ul>  | Normal dosage range is 200 ml - 600 ml / 50 kg of cement. |
| <b>Plastol™ 4200</b><br>(20 kg & 220 kg)<br>High Range Water Reducing Retarding Admixture (Confirms to ASTM C 494 Type G and IS 9103)              | <ul style="list-style-type: none"> <li>• General Ready mix concrete</li> <li>• High Performance, High strength concrete</li> </ul>                            | <ul style="list-style-type: none"> <li>• Improves workability</li> <li>• Reduces water requirement</li> <li>• Excellent slump retention</li> <li>• Increases all strength &amp; durability</li> <li>• Improves finished appearance</li> </ul> | Normal dosage range is 150 ml - 600 ml / 50 kg of cement. |
| <b>Plastol™ 5700</b><br>(20 kg & 220 kg)<br>Ready use High Range Water Reducing Admixture for concrete (Confirms to ASTM C 494 Type G and IS 9103) | <ul style="list-style-type: none"> <li>• High early strength concrete</li> <li>• High Performance concrete</li> <li>• Grades more than M70</li> </ul>         | <ul style="list-style-type: none"> <li>• Improved appearance</li> <li>• High early and ultimate strengths</li> <li>• Maximized efficiency for slump or flow increase</li> <li>• Reduced discharge time in forms</li> </ul>                    | Normal dosage range is 200 ml - 600 ml / 50 kg of cement. |



## CONCRETE ADMIXTURES

| Product (Product Description)   | Applications  | Features & Benefits   | Estimation  |
|---|---|---|---|
| <b>CONCRETE ADMIXTURES</b>  |   |   |   |
| <b>Plastol™ Ultra 209</b><br>(20 kg & 220 kg)<br>High Range Water Reducing & Superplasticizing Admixture<br>(Confirms to ASTM C 494 Type F and IS 9103) | <ul style="list-style-type: none"> <li>High early strength concrete</li> <li>High Performance concrete</li> <li>Precast/prestressed concrete</li> </ul> | <ul style="list-style-type: none"> <li>Improved cement hydration</li> <li>Low dosage</li> <li>Higher early and ultimate strengths</li> <li>Quicker stripping times</li> <li>Improved finishability</li> </ul>   | Normal dosage range is 200 ml - 600 ml / 50 kg of cement.                   |
| <b>Eucon™ Sureshot AF</b><br>(20 kg & 250 kg)<br>High Performance Alkali-Free Shotcrete Accelerator   | <ul style="list-style-type: none"> <li>Tunnel applications</li> <li>Mining applications</li> <li>Ground and slope stabilization</li> </ul>              | <ul style="list-style-type: none"> <li>Powerful enough for multiple, thick sprayed linings</li> <li>Effective at low doses</li> <li>Reduce rebound, especially when shooting overhead</li> </ul>  | 2.5% to 8% by weight of cement  |
| <b>Accelguard HE</b><br>(20 kg & 250 kg)<br>Accelerating & Water Reducing Admixture (Chloride based)<br>Confirms to ASTM C 494 Type C & E and IS 9103   | <ul style="list-style-type: none"> <li>Cold weather concreting</li> <li>Concrete pipe and blocks</li> </ul>   | <ul style="list-style-type: none"> <li>Reduces initial set</li> <li>Provides high early strength for fast form stripping</li> <li>Densifies concrete</li> </ul>   | 600 ml to 2000 ml per 50 kg of cement                                       |
| <b>Accelguard G3-IN</b><br>(20 kg & 200 kg)<br>Non-Chloride, Accelerating & Water-Reducing Admixture<br>(Confirms to ASTM C 494 Type C & E and IS 9103) | <ul style="list-style-type: none"> <li>Cold weather concrete</li> <li>Architectural concrete</li> <li>Precast and post tensioned concrete</li> </ul>    | <ul style="list-style-type: none"> <li>Reduces initial set 1 to 4 hours depending on concrete temperatures</li> <li>Improves compressive strength development at early age</li> <li>Decreases concrete form stripping times</li> </ul>  | 350 ml to 2000 ml per 50 kg of cement                                       |
| <b>Eucon™ Air Mix</b><br>(20 kg & 200 kg)<br>Aqueous solution of highly purified vinsol resin (Confirms to ASTM C 260)                                  | <ul style="list-style-type: none"> <li>Paving concrete</li> <li>Exterior concrete work exposed to freeze/thaw conditions concrete</li> </ul>            | <ul style="list-style-type: none"> <li>Concrete is made more resistant to de-icing salts, sulfate attack and corrosive water</li> <li>Minimizes bleeding and segregation</li> </ul>   | 15ml to 75 ml per 50 kg of cement to entrain 3% - 6% air content            |
| <b>Eucon™ AEA-92</b><br>(20 kg & 200 kg)<br>Air Entraining agent for Concrete<br>(Confirms to ASTM C 260)   | <ul style="list-style-type: none"> <li>Paving concrete</li> <li>Light weight concrete</li> </ul>  | <ul style="list-style-type: none"> <li>Provides a stable air void system with proper bubble size and spacing.</li> <li>Concrete is made more resistant to de-icing salts, sulfate attack and corrosive water</li> <li>Minimizes bleeding and segregation of the concrete</li> </ul> | 50 ml to 400 ml per 50 kg of cement to entrain 3% - 6% air content          |
| <b>Eucon™ Easy Fill</b><br>(20 kg & 250 kg)<br>Liquid Admixture for Flowable fill   | <ul style="list-style-type: none"> <li>Back-fill applications</li> <li>Light weight concrete, Foaming concrete</li> </ul>                               | <ul style="list-style-type: none"> <li>High flow reducing labor costs</li> <li>Controlled low strength, easy to excavate</li> <li>Non-bleeding, reduced settlement material resulting in volume stable installation</li> <li>Self compaction - no vibration</li> </ul>              | 100 ml to 2000 ml per 50 kg of cement depending on the air content expected |
| <b>Eucon™ Retarder 75</b><br>Water Reducing - Set Controlling Retarder (Confirms to ASTM C 494 Type B & D)  | <ul style="list-style-type: none"> <li>Hot weather concrete placement</li> <li>Concrete requiring extended setting times</li> </ul>                     | <ul style="list-style-type: none"> <li>Retards setting characteristics</li> <li>Improves workability</li> <li>Increases strengths</li> <li>Improves finished appearance</li> </ul>  | 50 mL to 250 ml per 50 kg of cement   |

### Speciality Products

|  |  |  |  |
|--|--|--|--|
| <b>Eucon™ DS</b><br>(20 kg & 250 kg)<br>Set retarding and Stabilizing Liquid Admixture (Confirms to ASTM C 494 Type B & D) | <ul style="list-style-type: none"> <li>Extended retardation</li> <li>Concrete requiring extended slump life</li> <li>Pumping concrete</li> </ul> | <ul style="list-style-type: none"> <li>Wash-out time is decreased due to the rapid cleansing action of the proprietary ingredients.</li> <li>Eliminates wash-out pits</li> <li>Superior set retardation</li> <li>Retains slump life for 2 hours or more</li> </ul> | Normal dosage range is 30 ml - 500 ml / 50 kg of cement. |
| <b>Eucon™ SRA Floor</b><br>(20 litre & 200 litres)<br>Shrinkage reducing Admixture<br>(Confirms to ASTM C494 Type S)       | <ul style="list-style-type: none"> <li>Floors</li> <li>Foundations</li> <li>Silos</li> </ul>   | <ul style="list-style-type: none"> <li>Reduces Shrinkages up to 50% at one year and beyond, depending on the cement used.</li> <li>Reduces cracking caused by drying shrinkage.</li> </ul>   | 0.5% to 2% by weight of cementitious content             |

## CONCRETE ADMIXTURES



Tuf-Strand™ - SF

| Product (Product Description)   | Applications   | Features & Benefits  | Estimation  |
|---|--|--|---|
| <b>Speciality Products</b>  |  |  |   |
| <b>Conex®</b><br>(20 kg)<br>Shrinkage reducing and Compensating powdered Admixture (Confirms to ASTM C494 Type S)             | <ul style="list-style-type: none"> <li>Flatwork concrete</li> <li>Bridge decks</li> <li>Storage tanks</li> </ul>   | <ul style="list-style-type: none"> <li>The expansion characteristics of CONEX® allow shrinkage reduction for concrete.</li> <li>It is compatible with the majority of Portland cements</li> <li>Expansion process is not through ettringite formation.</li> </ul>  | 1% to 10% by weight of cementitious content   |
| <b>Eucon™ Integral ARC</b><br>(20 kg & 250 kg)<br>Alkali Silica Reactivity Control Admixture ( Confirms to ASTM C 494 Type S) | <ul style="list-style-type: none"> <li>Highways and bridges</li> <li>Airport runways</li> <li>Warehouses</li> </ul>  | <ul style="list-style-type: none"> <li>Mitigates ASR expansion and cracking</li> <li>Eliminates ASR-induced popouts</li> <li>Increases life span of concrete</li> <li>Can be used with appropriate pozzolans</li> </ul>  | Dosage based on sodium equivalent in cement , pozzolana and reactivity of aggregate |
| <b>Visctrol™-IN</b><br>(20 kg & 250 kg)<br>Viscosity Modifying Admixture (Confirms to ASTM C 494 Type S)                      | <ul style="list-style-type: none"> <li>Self compacting concrete</li> <li>Reduction or elimination of concrete bleed water</li> </ul>   | <ul style="list-style-type: none"> <li>Greatly reduces or eliminates bleeding or segregation</li> <li>Evenly disperses aggregates within mix</li> <li>Eliminates need for vibration</li> <li>Eliminates segregation during pumping</li> </ul>  | Normal dosage range is 50 ml - 400 ml / 50 kg of cement.                            |
| <b>Eucon™ AWA</b><br>(20 kg & 250 kg)<br>Anti-Washout Admixture (Confirms to ASTM C 494 Type S)                               | <ul style="list-style-type: none"> <li>Underwater grouting and mortar application</li> <li>Anti- segregation aid</li> <li>Reduction or elimination of concrete bleed water for use with fast track construction</li> </ul> | <ul style="list-style-type: none"> <li>Minimal environmental impact due to cement washout</li> <li>Eliminates the need for expensive de-watering during underwater construction</li> <li>Greatly reduces or eliminates concrete bleed water</li> </ul>   | Normal dosage range is 300 ml - 1000 ml / 50 kg of cement.                          |
| <b>Eucon™ CIA</b><br>(20 kg & 250 kg)<br>Calcium Nitrite based Corrosion inhibitor (Confirms to ASTM C 494 Type C)            | <ul style="list-style-type: none"> <li>Exterior steel reinforced concrete</li> <li>Structural and plain concrete</li> </ul>  | <ul style="list-style-type: none"> <li>Extends service life of reinforced concrete structures</li> <li>Slows the rate of corrosion</li> <li>Provides set acceleration, reducing the need for additional accelerating admixtures in cold weather</li> <li>Dosage rate is related to expected chloride exposure</li> </ul> | Dosage is 10 L - 30 L / cubic metre of concrete                                     |
| <b>TUF-Strand™ SF</b><br>(11 kg box)<br>Patented polypropylene / polyethylene macro synthetic fiber(Confirms to ASTM C1116)   | <ul style="list-style-type: none"> <li>Slab on Grade and elevated construction</li> <li>Thin walled precast</li> <li>Pavements and white- toppings</li> </ul>  | <ul style="list-style-type: none"> <li>Equivalent strengths to WWM and rebar provided by engineering calculations</li> <li>Controls and mitigates plastic shrinkage cracking and reduces segregation and bleed-water</li> <li>Provides three-dimensional reinforcement against micro and macro-cracking</li> </ul>       | 1.8 to 12 kg/m <sup>3</sup>   |

## CONCRETE ADMIXTURES

| Product (Product Description)  | Applications   | Features & Benefits  | Estimation            |
|--|--|--|-----------------------|
| <b>Speciality Products</b>   |  |  |                       |
| <b>PSI™ Fibrestrand F</b><br>(9 kg box)<br>Fibrillated Polypropylene Micro-Fiber | <ul style="list-style-type: none"> <li>Slab on Grade, sidewalks, driveways, curb work, overlays</li> <li>Footings, foundations, walls and tank applications</li> <li>Pavements and white-toppings</li> </ul> | <ul style="list-style-type: none"> <li>Provides three-dimensional reinforcement against micro-cracking</li> <li>Controls and mitigates plastic shrinkage cracking. Increases surface durability, impact and abrasion resistance</li> </ul> | 0.9 kg/m <sup>3</sup> |

| <b>MCP Admixtures</b>   |   |  |  |
|---|---|--|--|
| <b>Eucon™ Pavertite</b><br>(20 kg & 250 kg)<br>Efflorescence Controlling Admixture for Concrete Masonry                   | <ul style="list-style-type: none"> <li>Concrete pavers</li> <li>Segmental retaining wall units</li> <li>Concrete roofing tile.</li> </ul> | <ul style="list-style-type: none"> <li>Reduced absorption to meet performance criteria</li> <li>Efflorescence control improves color / retention</li> <li>Higher density for maximized service life</li> </ul> | Normal dosage range is 150 ml - 400 ml / 50 kg of cement |
| <b>Eucon™ DC-IN</b><br>(20 kg & 250 kg)<br>Plasticizing Admixture for manufactured concrete products                      | <ul style="list-style-type: none"> <li>Concrete block</li> <li>Segmental retaining wall units</li> <li>Drycast products</li> </ul>        | <ul style="list-style-type: none"> <li>Improves feed and cycle times</li> <li>More defined edges</li> <li>Improved compressive strengths</li> <li>Extended mold life</li> </ul>                                | Normal dosage range is 200 ml - 600 ml / 50 kg of cement |
| <b>Integral Waterpeller-IN</b><br>(20 kg & 250 kg)<br>Waterproofing Admixture for Concrete & mortar (Confirms to IS 2645) | <ul style="list-style-type: none"> <li>Mass concrete</li> <li>Foundation walls</li> <li>Weyer retaining structures</li> </ul>             | <ul style="list-style-type: none"> <li>Improves workability</li> <li>Reduces permeability</li> <li>Does not effect bond strength of mortar</li> </ul>  | Normal dosage range is 100 ml - 200 ml / 50 kg of cement |

| <b>Curing &amp; Sealing Concrete</b>   |  |  |  |
|--|--|--|--|
| <b>Solvent Based Curing and Sealing Compounds</b>  |  |  |  |
| <b>Super Diamond Clear</b><br>(20 L & 200 L)<br>High Solids, Solvent based non-yellowing acrylic blend cure & seal<br>ASTM C1315, Type 1, Class A<br>ASTM C309, Type 1, Classes A & B  | <ul style="list-style-type: none"> <li>Driveways &amp; exterior pavements</li> <li>Walls and columns; Dry shake floors</li> <li>Exposed aggregate</li> <li>Curing and sealing decorative concrete</li> </ul> | <ul style="list-style-type: none"> <li>Highest performance, non-yellowing cure and seal</li> <li>Good for re-sealing</li> <li>Promote development of concrete strength and durability through proper curing</li> </ul>   | Curing & Sealing Fresh Concrete - 7.4 to 9.8 m <sup>2</sup> /L*              |
| <b>Everclear</b><br>(20 L & 200 L)<br>Solvent-based, 100% acrylic cure & seal for decorative concrete<br>ASTM C1315, Type 1, Class A<br>ASTM C309, Type 1, Classes A & B               | <ul style="list-style-type: none"> <li>Stamped Concrete, concrete Pavers</li> <li>Terrazzo</li> <li>Driveways &amp; sidewalks</li> <li>Decorative concrete overlays</li> </ul>                               | <ul style="list-style-type: none"> <li>Excellent sealer for decorative concrete</li> <li>Non-yellowing and a breathable seal</li> <li>Enhances color and texture</li> <li>Harder and more durable</li> </ul>   | First coat - 7.3 m <sup>2</sup> / L*<br>Second coat - 9.8 m <sup>2</sup> /L* |
| <b>Diamond Clear</b><br>(20 L & 200 L)<br>Solvent-based, Non-yellowing acrylic blend cure & seal for Fresh Concrete<br>ASTM C1315, Type 1, Class A<br>ASTM C309, Type 1, Classes A & B | <ul style="list-style-type: none"> <li>Exterior or interior concrete surfaces</li> <li>Walls and columns</li> <li>Parking garages</li> <li>Dry shake hardened floors</li> </ul>                              | <ul style="list-style-type: none"> <li>Seals all concrete surfaces providing a glossy appearance</li> <li>Improves new concrete (with proper cure &amp; strong surface)</li> <li>Dustproofs concrete with a tough durable film</li> <li>Non-Yellowing</li> </ul> | 7.4 to 9.8 m <sup>2</sup> /L*  |
| <b>REZ-Seal</b> (20 L & 200 L)<br>Solvent based, Acrylic co-polymer, cure & seal for concrete<br>ASTM C1315, Type 1, Class C<br>ASTM C309, Type 1, Classes A & B                       | <ul style="list-style-type: none"> <li>Industrial floor slabs; Dry shake floors</li> <li>Parking garages; Exterior pavements</li> <li>Walls and columns</li> <li>Concrete toppings</li> </ul>                | <ul style="list-style-type: none"> <li>Provides transparent curing film for new concrete</li> <li>Seals new concrete surfaces (glossy appearance)</li> <li>Helps strengthen new concrete by promoting proper cement hydration</li> </ul>                         | Curing & Sealing Fresh Concrete - 7.4 to 9.8 m <sup>2</sup> /L*              |



## CONCRETE ADMIXTURES

| Product (Product Description)   | Applications   | Features & Benefits   | Estimation                    |
|---|--|---|-------------------------------|
| <b>Curing &amp; Sealing</b>   |  |   |                               |
| <b>Kurez DR VOX</b> (20 L & 200 L)<br>Dissipating curing compound<br>ASTM C309, Types 1 and 1D,<br>Classes A & B<br>USGBC LEED Version 4,<br>BD&C, ID&C | <ul style="list-style-type: none"> <li>Curing interior or exterior* concrete (*Product film will discolor when exposed to sunlight)</li> <li>Concrete that will later receive a coating</li> <li>Where a long term membrane film is not desired on the concrete surface</li> </ul> | <ul style="list-style-type: none"> <li>Dissipates over time with exposure to UV light and traffic</li> <li>Helps to minimize dusting</li> <li>Proper curing resulting in stronger, more wear resistant concrete</li> </ul>                                | 7.4 to 9.8 m <sup>2</sup> /L* |
| <b>Kurez DR-100</b><br>(20 kg & 250 kg)<br>Low VOC, dissipating curing compound ASTM C309, Types 1 and 1D, Classes A & B                                | <ul style="list-style-type: none"> <li>Curing interior or exterior* concrete (*Product film will discolor when exposed to sunlight)</li> <li>Concrete that will later receive a coating</li> <li>Where a long term membrane film is not desired on the concrete surface</li> </ul> | <ul style="list-style-type: none"> <li>Proper curing resulting in stronger, more wear resistant concrete</li> <li>Helps to minimize dusting</li> <li>Breaks down quickly (allow application of floor covering)</li> <li>Easy Spray application</li> </ul> | 7.4 to 9.8 m <sup>2</sup> /L* |
| <b>Kurez VOX White Pigmented</b><br>(20 kg & 250 kg)<br>White Pigmented Curing compound ASTM C309, Type 2, Class A                                      | <ul style="list-style-type: none"> <li>Walls, columns, and highway barriers</li> <li>Residential/commercial concrete</li> <li>Sidewalks, curbs, gutters, Exterior paving</li> <li>Bridge decks and parapet walls</li> </ul>  | <ul style="list-style-type: none"> <li>Forms efficient moisture barrier for curing of concrete</li> <li>Helps ensure proper cement hydration</li> <li>Low VOC</li> <li>Exterior applications where sunlight reflectivity is needed</li> </ul>             | 5 to 7 m <sup>2</sup> /kg     |
| <b>Kurez W VOX</b><br>(20 kg & 250 kg)<br>Wax based, low VOC curing compound<br>ASTM C309, Type 1, Class A  | <ul style="list-style-type: none"> <li>Walls and columns, Exterior paving</li> <li>Sidewalks, curbs, and gutters</li> <li>Interior &amp; exterior, Residential concrete</li> <li>Decks and parapet walls</li> </ul>  | <ul style="list-style-type: none"> <li>Forms efficient moisture barrier for curing of concrete</li> <li>Assists in proper cement hydration</li> <li>Designed for interior or exterior applications</li> <li>Low VOC</li> </ul>                            | 5 to 7 m <sup>2</sup> /kg     |

### Water Based Curing and Sealing compounds

|  |  |  |                               |
|--|--|--|-------------------------------|
| <b>Everclear VOX</b><br>(20 L & 200 L)<br>Water based, Pure acrylic cure & seal ASTM C309, Type 1, Classes A & B   | <ul style="list-style-type: none"> <li>Concrete driveways, sidewalks, floors</li> <li>Stamped, stenciled, colored, acid stained concrete</li> <li>Concrete pavers and precast units</li> <li>Cultured stone, Terrazzo</li> </ul> | <ul style="list-style-type: none"> <li>Non-yellowing, medium-gloss sealer provides protection and improved appearance to concrete</li> <li>Low odor, Complies with all nationwide VOC regulations</li> <li>Excellent abrasion and blush resistance</li> <li>Can be applied over previous coats of sealers</li> </ul> | 7.4 to 9.8 m <sup>2</sup> /L* |
| <b>Diamond Clear VOX</b><br>(20 L & 200 L)<br>Water based, acrylic polymer blend<br>Cure & Seal for concrete<br>ASTM C309, Type 1, Classes A & B   | <ul style="list-style-type: none"> <li>Curing and sealing new concrete</li> <li>Commercial buildings</li> </ul>  | <ul style="list-style-type: none"> <li>Very low odor; Non-Yellowing</li> <li>Perfect for interior or exterior projects</li> <li>Non-yellowing formula</li> <li>Monolithic membrane for great curing properties</li> </ul>  | 4.9 to 7.4 m <sup>2</sup> /L* |
| <b>Super Diamond Clear VOX</b><br>(20 L & 200 L)<br>Water based, High solids,<br>Non-Yellowing Cure & Seal for concrete<br>ASTM C1315, Type 1, Class A<br>ASTM C309, Type 1, Classes A & B | <ul style="list-style-type: none"> <li>Curing and sealing concrete where a non-yellowing, glossy finish is desired</li> </ul>  | <ul style="list-style-type: none"> <li>Subsequent flooring can be applied directly over product (see Precautions/Limitations section)</li> <li>Can contribute to LEED points</li> <li>Perfect for interior or exterior projects</li> </ul>   | 7.4 to 9.8 m <sup>2</sup> /L* |



## CONCRETE ADMIXTURES

| Product (Product Description)  | Applications   | Features & Benefits   | Estimation   |
|--|--|---|--|
| <b>Water Based Curing and Sealing compounds</b>  |  |   |  |
| <b>Aqua-cure VOX</b><br>(20 L & 250 L)<br>Water based, low odor cure & seal ASTM C309, Type 1, Classes A & B   | <ul style="list-style-type: none"> <li>Hospitals</li> <li>Exterior concrete, Walls, Pavements</li> <li>Industrial floors, Basements &amp; footings</li> <li>Interior &amp; exterior concrete surfaces</li> </ul>               | <ul style="list-style-type: none"> <li>Forms moisture barrier for curing of concrete</li> <li>Seals concrete surfaces to protect against the effects of weathering</li> <li>Increases durability &amp; prevent dusting of new concrete</li> <li>Non-yellowing on UV exposure</li> </ul> | 4.9 to 7.4 m <sup>2</sup> /L*  |
| <b>Super Aqua-cure VOX</b><br>(20 L & 250 L)<br>Water based, High solids, Low odor cure & seal for concrete ASTM C1315, Type 1, Class B ASTM C309, Type 1, Classes A & B | <ul style="list-style-type: none"> <li>Parking decks, Pavements</li> <li>Interior &amp; exterior concrete</li> <li>Industrial floors, Basements &amp; footings</li> <li>Walls</li> </ul>                                       | <ul style="list-style-type: none"> <li>Forms moisture barrier for optimum curing of concrete</li> <li>Greater coverage, better durability and eliminate dusting of new concrete</li> <li>Seals concrete surfaces (protect the effects of weathering)</li> </ul>                         | 7.4 to 9.8 m <sup>2</sup> /L*  |
| <b>Eucocure VOX</b><br>(20 kg & 250 kg)<br>Economical water-based acrylic curing & sealing compound ASTM C309, Type 1, Classes A & B                                     | <ul style="list-style-type: none"> <li>Curing and sealing concrete</li> <li>Interior and exterior applications</li> </ul>  | <ul style="list-style-type: none"> <li>Moderate protection against water penetration and gives the concrete a low-sheen appearance.</li> <li>Low Odour</li> </ul>   | 4.9 to 7.4 m <sup>2</sup> /L*  |
| <b>Eucocure VOX White-IN</b><br>(20 kg & 250 kg)<br>White pigmented Acrylic based cure & seal  | <ul style="list-style-type: none"> <li>Curing and sealing concrete</li> <li>Interior and exterior applications</li> <li>Footing, Columns, Beams &amp; Slabs, Sideways, Curbs, Gutters, Bridgedeck and parapet walls</li> </ul> | <ul style="list-style-type: none"> <li>Non-degrading compound can act as a primer for subsequent coatings</li> <li>Good initial cure &amp; protection</li> <li>Solar Light Reflective; Low odour</li> </ul>   | 4 to 6 m <sup>2</sup> /kg  |
| <b>Form Release agents</b>   |  |   |  |
| <b>Formshield GV-IN</b><br>(20 L & 200 L)<br>General use, Veg Oil based, Chemically reactive Concrete form release   | <ul style="list-style-type: none"> <li>Preventing adhesion of concrete to forms of all types</li> <li>Plywood, Aluminium, Metal, Plastic, Wood &amp; composition forms</li> </ul>  | <ul style="list-style-type: none"> <li>Form release easily &amp; cleanly</li> <li>Reduce occurrence of voids and bug holes</li> <li>Less Staining; Low odour</li> <li>Tolerant to freezing conditions during storage and transportation</li> </ul>                                      | 30-60 m <sup>2</sup> /L*   |
| <b>Formshield WB Concentrate</b><br>(20 L & 200 L)<br>Release agent for concrete forms   | <ul style="list-style-type: none"> <li>Can be used on metal, Plastic forms and on previously oiled or untreated wood forms</li> </ul>  | <ul style="list-style-type: none"> <li>Provide quick and clean release of forms minimizing preparation for reuse</li> <li>Reduces labor and construction time</li> <li>Economical concentrated solution</li> </ul>  | 80-160 m <sup>2</sup> /L after dilution 1:5 with water   |
| <b>Formshield Pure</b><br>(20 L & 200 L)<br>Premium, Oil based, Chemically reactive concrete form release  | <ul style="list-style-type: none"> <li>Preventing adhesion of concrete to forms of all types in precast and architectural concrete applications</li> </ul>   | <ul style="list-style-type: none"> <li>Form release easily &amp; cleanly</li> <li>Reduce occurrence of voids and bug holes</li> <li>No Staining; Low odour</li> <li>Tolerant to freezing conditions during storage and transportation</li> </ul>  | Plywood Forms: 8.59 to 12.27 m <sup>2</sup> /L / Metal Forms: 19.63 to 24.54 m <sup>2</sup> /L |
| <b>Formshield WB</b><br>(20 L & 200 L)<br>Release agent for concrete forms   | <ul style="list-style-type: none"> <li>Water based formulation can be applied to forms of all types for easy removal from freshly placed concrete</li> </ul>   | <ul style="list-style-type: none"> <li>Provide quick and clean release of forms minimizing preparation for reuse</li> <li>Reduces labor and construction time</li> <li>Minimizes clean-up &amp; maintenance</li> </ul>  | Plywood Forms: 8.59 to 12.27 m <sup>2</sup> /L / Metal Forms: 19.63 to 24.54 m <sup>2</sup> /L |
| <b>Formshield Pure-IN</b><br>(20 L & 200 L)<br>Oil based Concrete Form Release   | <ul style="list-style-type: none"> <li>Preventing the adhesion of concrete to forms of all types</li> </ul>  | <ul style="list-style-type: none"> <li>Forms release easily and cleanly from concrete</li> <li>No staining, Very low odour</li> <li>Reduces the occurrence of voids and bugholes</li> <li>Treated forms are ready for use quickly</li> </ul>  | 20 to 60 m <sup>2</sup> /L depends upon substrate  |
| <b>Miscellaneous Products</b>  |  |   |  |
| <b>Eucon™ CSR</b> (20 L & 200 L)<br>Concrete surface retarder  | <ul style="list-style-type: none"> <li>Precast panels, Decorative sidewalks and walkways, Creation of exposed aggregate surfaces, Bond improvement for waterproofing materials</li> </ul>                                      | <ul style="list-style-type: none"> <li>Safe to use; Easy to apply; Works quickly</li> <li>Reduces cost of mechanically preparing surfaces for waterproofing, stucco or plaster applications</li> <li>Provides upto 6mm depth retardation</li> </ul>                                     | 7.0 to 12.0 m <sup>2</sup> /L Coat   |

\*Coverage will vary from given rates depending on surface porosity and texture

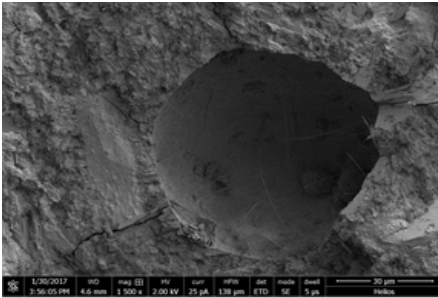
## SEALANTS

| Product (Product Description)   | Applications  | Features & Benefits   | Coverage / Yield / Dosage                          |
|---|---|---|--|
| <b>Expansion Jointing System &amp; Sealants</b>   |   |   |  |
| <b>Dymonic 100</b> (600 ml Sausage)<br>Single-component, moisture tolerant, polyurethane sealant. Movement capability + 100/-50% Elongation 800-900% Hardness 40 +/-5       | <ul style="list-style-type: none"> <li>Precast concrete panel joints, Perimeter caulking, Aluminum, masonry and vinyl siding, Detailing under ExoAir, Paraseal, TREMproof, Vulkem coatings and membranes</li> </ul> | <ul style="list-style-type: none"> <li>Excellent movement capability</li> <li>Adheres to damp or green concrete.</li> <li>Low VOC, long term UV resistance</li> </ul> | 600 ml ~ 25 m / litre for a 6 x 6 mm joint         |
| <b>Eucolastic 1 NS</b> (600 ml Sausage)<br>General purpose single-component, polyurethane sealant. ASTM C920 Type S, Grade NS, Class 35                                     | <ul style="list-style-type: none"> <li>Precast concrete panel joints, perimeter caulking, aluminium, masonry, Vinyl siding and detailing for TREMproof coatings and Membranes</li> </ul>                            | <ul style="list-style-type: none"> <li>Rapid Skinning and tack free</li> <li>Can be painted on</li> <li>Wide Substrate adhesion</li> </ul>                            | 600 ml ~ 7.6 m / 0.6 litre for a 6 x 6 mm joint.   |
| <b>TREMflex 50</b> (600 ml Sausage)<br>Low modulus joint sealant for general purpose application.   | <ul style="list-style-type: none"> <li>Precast concrete Panel Joints, perimeter caulking, aluminium, masonry, Vinyl siding and detailing for TREMproof coatings and Membranes</li> </ul>                            | <ul style="list-style-type: none"> <li>Rapid Skinning and tack free</li> <li>Can be painted on</li> <li>Wide Substrate adhesion</li> </ul>                            | 600 ml ~ 24.0 m / 0.6 litre for a 5mm x 5mm joint. |
| <b>Tammsflex SL / NS-IN</b> (4 kg)<br>Two-part Polysulphide Joints Sealant  | <ul style="list-style-type: none"> <li>Water Structures, Petrol Stations, foundation, reservoir, exposed RCC structures</li> </ul>  | <ul style="list-style-type: none"> <li>Good movement capability</li> <li>Seal Wider Joint upto 50mm</li> <li>Chemical Resistance</li> </ul>                           | Refer TDS  |
| <b>Vulkem® 202</b> (18.9 L)<br>Jet Fuel resistance Polyurethane Sealant for Airfields BS5212: 1990 Types N, F & FB and US. Fed Spec. SS-S-200E:1993.                        | <ul style="list-style-type: none"> <li>Airports, Runways, Taxiways, PQC Roads, Pavements, Fuel Stations Areas with Fuel spillage</li> </ul>   | <ul style="list-style-type: none"> <li>Aircraft Fuel Resistance</li> <li>Long term UV &amp; Weathering</li> </ul>   | 602 ml ~ 24.0 m / 0.6 litre for a 5mm x 5mm joint. |
| <b>Dural 340 SL-IN</b> (5 kg)<br>Construction & control joint filler & traffic loop sealant USDA compliant  | <ul style="list-style-type: none"> <li>Concrete Joints indoors, Airport Lighting joints, Food, Beverages, Meat processing Industry, Engineering facilities</li> </ul>   | <ul style="list-style-type: none"> <li>Protects Edges and prevents spalling</li> <li>Mild Chemical resistance</li> </ul>  | Refer TDS  |
| <b>Uniseal® 200/90</b> (5 L & 10 L)<br>Jet Fuel resistance Polyurethane Sealant for Airfields BS5212: 1990 Types N, F & FB and US. Fed Spec. SS-S-200E:1993. BS EN 14188-2. | <ul style="list-style-type: none"> <li>Airports, Runways, Taxiways, PQC Roads, Pavements, Fuel Stations Areas with Fuel spillage</li> </ul>   | <ul style="list-style-type: none"> <li>Aircraft Fuel Resistance</li> <li>Long term UV &amp; Weathering</li> </ul>   | ~ 10.0 m / 1 litre for a 10 mm x 10 mm joint.      |

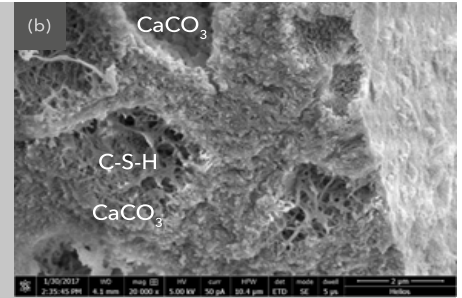
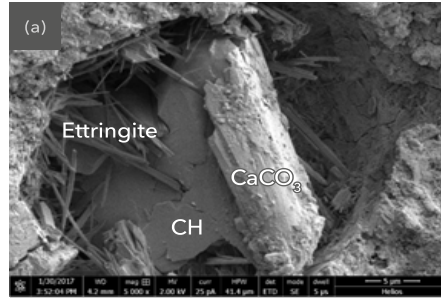
### Cement Polymer Slurry Applied Coatings

|  |  |  |                         |
|--|--|--|-------------------------|
| <b>TREMproof FCW</b> (36 kg)<br>Highly Flexible, cement polymer based waterproofing coating                | <ul style="list-style-type: none"> <li>Concrete and masonry structures, Water tanks, Balconies, reservoirs, Wet Areas, Swimming pools</li> </ul>   | <ul style="list-style-type: none"> <li>&gt;150% Elongation</li> <li>Breathable</li> <li>Seals cracks upto 2mm</li> </ul>   | 2 - 4 kg/m <sup>2</sup> |
| <b>Tamoseal</b> (21 kg)<br>Cement based two component cement polymer general purpose waterproofing coating | <ul style="list-style-type: none"> <li>Concrete and masonry structures, Water tanks, Balconies, reservoirs, Wet Areas, Swimming pools</li> </ul>   | <ul style="list-style-type: none"> <li>Becomes an integral part of substrate</li> <li>Breathable</li> <li>Slightly flexible to seal static cracks</li> </ul>   | 2 - 4 kg/m <sup>2</sup> |
| <b>Tamoseal Flex-IN</b> (23 kg)<br>Cement based two component cement polymer flexible coating              | <ul style="list-style-type: none"> <li>Concrete and masonry structures, Water tanks, Balconies, reservoirs, Wet Areas, Swimming pools</li> </ul>   | <ul style="list-style-type: none"> <li>Waterproofs and decorates</li> <li>Becomes an integral part of substrate</li> <li>Breathable</li> </ul>   | 2 - 4 kg/m <sup>2</sup> |
| <b>Tammscoat WP-IN</b> (25 kg)<br>Waterproof elastomeric exterior coatings                                 | <ul style="list-style-type: none"> <li>Resistance to U.V. Radiation, Fungus &amp; Moss, Scratch proof</li> <li>Excellent water repellency &amp; tough repellent</li> <li>No peel-off tendency</li> <li>Stable at high temperatures;Roof Coating</li> </ul> | <ul style="list-style-type: none"> <li>Single component, ready to use system</li> <li>No water curing required</li> <li>Quick drying at room temperature</li> <li>Can be pigmented in wide colour range</li> </ul> | Refer TDS               |

## WATERPROOFING



SEM images of an open pore in plain cement paste without any crystalline waterproofing treatment



SEM images of void spaces blocked by crystals in cement paste samples treated by (a) VANDEX AM 10 and (b) VANDEX SUPER



| Product (Product Description)  | Applications   | Features & Benefits  | Estimation                                      |
|--|--|--|---|
| <b>Vandex Crystalline Waterproofing System</b>   |  |  |   |
| <b>Vandex Super</b> (25 kg)<br>Crystalline Waterproofing Coating for positive & negative side waterproofing. BBA (British Board of Aggrement) approval. Potable Water certificate from WRAS, NSF | <ul style="list-style-type: none"> <li>New &amp; repair waterproofing for WTP, Swimming Pools, Foundations, Walls, Water structures, Tunnels</li> </ul>  | <ul style="list-style-type: none"> <li>Positive or negative side Waterproofing</li> <li>Resistant to hydrostatic pressure</li> <li>Can be applied to "green" concrete structures</li> <li>Potable water use certified</li> </ul> | brush or spray in 2 coats 1.5 kg/m <sup>2</sup> |
| <b>Vandex AM10</b> (20 kg)<br>High performance, Crystalline waterproofing powder admixture / additive to structural concrete   | <ul style="list-style-type: none"> <li>Waste &amp; Drinking water structures, tunnels, subways, foundations and basements, parking structures, pre-cast concrete, dams and reservoirs, marine structures, man holes</li> </ul> | <ul style="list-style-type: none"> <li>Resistant to hydrostatic pressure</li> <li>Permanent Waterproof</li> </ul>  | 1-2 % by Weight of Cementitious Mass            |
| <b>Vandex BB 75 Grey / White</b> (25 kg)<br>Innovative cement based waterproofing slurry for positive & negative side hydrostatic pressure. BBA (British Board of Approval). WRAS Approval       | <ul style="list-style-type: none"> <li>Concrete and masonry structures, foundation, wall, retaining wall, water structure</li> </ul>   | <ul style="list-style-type: none"> <li>Positive or negative side to minimize excavation</li> <li>NSF approved for potable water</li> <li>Perfect for vertical/overhead and horizontal surfaces</li> </ul>                        | 4 - 6 kg/m <sup>2</sup>                         |
| <b>Speed Plug</b> (5 & 25 kg)<br>Rapid-Setting Hydraulic Cement for sealing gushing water  | <ul style="list-style-type: none"> <li>Plugging of water into concrete, masonry structures</li> </ul>  | <ul style="list-style-type: none"> <li>Non-shrinking, non-metallic and non-corrosive</li> <li>Initial set in 1-3 minutes</li> <li>Instantly stops running water or seepage leaks</li> </ul>                                      | 1 kg for 1.5 m of 20 mm x 2 mm                  |
| <b>Vandex UniMortar 1</b> (25 kg)<br>Waterproof Repairing mortar for horizontal & vertical surfaces as general purpose repair mortar of M40 grade  | <ul style="list-style-type: none"> <li>Structural Slabs, Swimming Pools, Foundation &amp; basement, Reservoirs, Spillways, Culverts, Manholes</li> </ul>   | <ul style="list-style-type: none"> <li>Non-shrinking, Waterproof Mortar</li> <li>Positive or negative side application</li> </ul>  | 12 - 24 kg/m <sup>2</sup>                       |

## WATERPROOFING

| Product (Product Description)   | Applications  | Features & Benefits   | Estimation              |
|---|---|---|-------------------------|
| <b>TREMPROOF Sub-structure / Below Ground Waterproofing Membrane</b>  |   |   |                         |
| <b>TREMPROOF 3700 HD (TREMPROOF FBM)</b><br>(1.2mm / 1.5mm / 2mm X 1.0m X 20.0m)<br>Fully bonded, Pre-applied HDPE membrane for waterproofing of foundation & Sub-structure                       | <ul style="list-style-type: none"> <li>Foundation, Raft, Slab, footings, single shutter Retaining Walls, Diaphragm Walls</li> </ul>   | <ul style="list-style-type: none"> <li>Forms permanent integral bond to concrete.</li> <li>Prevents water from seeping between concrete &amp; membrane</li> <li>Unaffected by ground settlement</li> <li>No protection needed</li> </ul>  | Roll / 20m <sup>2</sup> |
| <b>TREMPROOF 3300 HD IN</b><br>(1.6mm X 1.0m x 15.0m)<br>Fully bonded, post applied SBS modified bituminous membrane with cross HDPE lamination & PE reinforcement                                | <ul style="list-style-type: none"> <li>Foundation, Footings, Back fill Retaining walls, Roofs, Deck, Plazas, Podiums</li> </ul>   | <ul style="list-style-type: none"> <li>Forms permanent integral bond to concrete, metal, wood</li> <li>Cold-applied, safe, no heating or torching needed.</li> <li>Effective barrier from water, moisture contaminants, dampproofing</li> </ul>   | Roll / 15m <sup>2</sup> |
| <b>TREMPROOF Amphibia</b><br>(1.3mm X 1.8m X 20m)<br>Pre-applied, fully bonded, Unique Self-healing, Self-sealing, Self-repairing, EPDM membrane. BBA (British Board of Agreement) Approved.      | <ul style="list-style-type: none"> <li>Foundation, Raft, Slab, Pits, Sumps, Footings, Double Side shutter walls, Diaphragm Wall, Restoration of Old Foundation, Pits &amp; Sumps. Most effective waterproof tanking across slab &amp; retaining wall globally.</li> </ul> | <ul style="list-style-type: none"> <li>Self-healing, self-sealing &amp; self-repairing</li> <li>Double the construction speed over other membrane</li> <li>Exceptional elongation &amp; crack-bridging</li> <li>Protects against gas &amp; natural ground agents</li> <li>Compatible with TREMDRAIN® solutions</li> </ul> | Roll / 36m <sup>2</sup> |
| <b>TREMDRAIN Series</b><br>(1.2m X 16.66m)<br>Multi-composite drainage and protection board with filter fabric and drainage core available in 0.8 mm & 1.2mm sheet thickness & 10mm Dimple Height | <ul style="list-style-type: none"> <li>Foundation, Retaining Walls, Vegetated built up, roofs</li> </ul>  | <ul style="list-style-type: none"> <li>High Compressive Strength</li> <li>High water flow rates</li> </ul>  | 1.2m X 16.66m           |

### Cold Fluid Applied Waterproofing

|  |   |   |   |
|--|---|---|---|
| <b>TREMPROOF® 250GC</b><br>(18.9 L / 5 Gal)<br>Single component, fluid-applied, high solids, moisture tolerant, COAL-TAR free Polyurethane Waterproofing membrane      | <ul style="list-style-type: none"> <li>Podium, Roof, Plazas, Vegetated planters, Foundation Walls, Back-filled Retaining walls, Balcony, Wet Areas</li> </ul>         | <ul style="list-style-type: none"> <li>Applied over Green Concrete - 24hr Old</li> <li>No Blisters or Bubbling</li> <li>High Hardness waterproof film</li> <li>Available over Roller, Self Levelling Grade</li> </ul>                   | 1.64 Litres/m <sup>2</sup><br>@ 1.5mm DFT             |
| <b>TREMPROOF® 201/60 (TP 60H)</b><br>Single component, fluid-applied, high solids, COAL-TAR free, moisture cured Polyurethane Waterproofing membrane.                  | <ul style="list-style-type: none"> <li>Podium, Roof, Plazas, Vegetated planters, Foundation Walls, Back-filled walls, Balcony, Wet Areas</li> </ul>                   | <ul style="list-style-type: none"> <li>Economical Waterproofing Membrane</li> <li>Easy to use, primerless direct to concrete</li> <li>Available over Roller, Self Levelling Grade</li> </ul>  | 1.64 Litres/m <sup>2</sup><br>@ 1.5mm DFT             |
| <b>TAMMSFLEX WP IN</b><br>(13 kg, 20 kg)<br>Single component, fluid-applied, Urethane Acrylic water based Waterproofing coating for UV Exposed & concealed application | <ul style="list-style-type: none"> <li>Roofs, Plaza, Balcony, Podium</li> </ul>   | <ul style="list-style-type: none"> <li>Water based for easy clean up in water</li> <li>UV stable non yellowing, can be used externally</li> <li>External/ Internal applications</li> <li>Excellent crack-bridging properties</li> </ul> | 1.12 Litres/m <sup>2</sup><br>@ 2 coats for 1.2mm DFT |
| <b>ALPHAGUARD® PUMA (Repoma)</b><br>Unique 100% Solids PUMA liquid applied Roof Waterproofing for new build & roof repairs / restoration. UL Certified. BBA Approved.  | <ul style="list-style-type: none"> <li>Balconies, Mechanical Rooms, Roof Terraces, Under Tile, New &amp; old structures &amp; Bitumen membrane, metal roof</li> </ul> | <ul style="list-style-type: none"> <li>Excellent Physical Properties</li> <li>Excellent crack-bridging properties</li> <li>Very good adhesion to Concrete, Metal, Old Bitumen sheet</li> </ul>  | Refer TDS   |

## WATERPROOFING



| Product (Product Description)  | Applications   | Features & Benefits   | Estimation  |
|--|--|---|---|
| <b>Cold Fluid Applied Waterproofing</b>  |  |   |   |
| <b>AlphaGuard® MT System</b><br>(18.9 L / 5 Gal)<br>Comprises an aliphatic Base Coat, Top coat and primer. It is a one-part, moisture triggered, polyurethane roof coating. Used with reinforcement mat reinforcement. FM Approved | <ul style="list-style-type: none"> <li>New &amp; old concrete roofs, Aged or new asphalt substrate, old single ply membrane, IRMA, Built Up Roofing System</li> </ul>  | <ul style="list-style-type: none"> <li>Moisture Triggered, Resists Foaming, Wash off and Cures uniformly</li> <li>Reflective top coat lowers surface temperatures</li> <li>High SRI; Increases roof life</li> <li>Low VOC, Low Odor, Meets California VOC limits and can be used in limited access areas</li> </ul> | Refer TDS   |
| <b>AlphaGuard® Bio System</b><br>Odourless, chemically cured, polyurethane roof waterproofing system (high bio-based content). Consists of Base coat & Top coat are a two-part.  | <ul style="list-style-type: none"> <li>New &amp; old concrete roofs, roof restotation for Bitumen, Single ply and Vegetative roof assemblies, IRMA, Areas where odor or VOC high standards are needed - Schools, Offices, Hospitals, Medical.</li> </ul> | <ul style="list-style-type: none"> <li>Zero VOC, LEED Certified</li> <li>Reflective top coat lowers surface temperatures, high SRI</li> <li>Very good adhesion to concrete, Old bitumen sheet</li> </ul>  | Top Coat: 7.5 L / Sq.m at 800 micron wft.<br>Non-Skid Coat: 5 L / Sq.m at 600 wft               |
| <b>Solargard® 6083</b> (18.9 L)<br>Acrylic elastomeric coating for waterproofing and weather proofing of various roof surfaces. Available in white, standard, and custom colors.   | <ul style="list-style-type: none"> <li>Waterproofing &amp; weatherproof concrete, metal, weathered single ply membrane, as well as smooth surface bitumen membranes</li> </ul>   | <ul style="list-style-type: none"> <li>Resistance to weathering and dirt pick up</li> <li>Increases roof life, lowers energy costs;</li> <li>Resistant to biological attack &amp; algae degradation; High SRI value</li> <li>Exceeds all requirements of ASTM D 6083 acrylic roof coating specification</li> </ul>  | 0.4 L/m <sup>2</sup> , per coat at 0.4 mm WFT per coat.   |
| <b>Alumination® 301</b> (3.4 L)<br>Premium reflective Fibred aluminium coating   | <ul style="list-style-type: none"> <li>Rustproofing and weatherproofing corroded metal roofs and modified bitumen roof systems</li> </ul>  | <ul style="list-style-type: none"> <li>Easy to use; Direct to metal &amp; bitumen sheet; Highly reflective</li> <li>Protecting the roof from harmful UV</li> <li>Most suitable for weathered / old roofing or built up roof systems as it prevents rust from progressing on the metallic surface</li> </ul>         | Metal: 0.8 L/m <sup>2</sup><br>Smooth Built-Up/Modified Bitumen Roofing: 1.0 L / m <sup>2</sup> |
| <b>Tammscoat WP</b> (25 kg)<br>Single component, pigmented, acrylic, waterproofing elastomeric exterior coating for UV exposed application   | <ul style="list-style-type: none"> <li>Exterior surfaces as concrete, masonry.</li> </ul>  | <ul style="list-style-type: none"> <li>Good Waterproofing</li> <li>Resistance to U.V. Radiation</li> <li>Resistance to Fungus and moss</li> <li>Excellent Brightness and finish</li> </ul>  | 0.4 -0.5 kg/m <sup>2</sup> /coat  |

| <b>Spray Applied Waterproofing System</b>   |   |  |              |
|---|---|--|--------------|
| <b>BlueShield® PmB</b><br>(400 kg)<br>Blue Pigmented, two-part, BBA (British Board of Agreement)                            | <ul style="list-style-type: none"> <li>Podium, Roof, Water structures, Tunnels, Basement Retaining wall, Foundation, Concrete, metal, steel, other substrate</li> </ul> | <ul style="list-style-type: none"> <li>Good Puncture Resistance</li> <li>Excellent crack bridging</li> <li>Water vapour and gas permeability</li> <li>Chemical resistance</li> <li>Resistant to root / microbial attack</li> </ul> | 1.6 - 3 mm   |
| <b>TREMproof Micorea S3</b><br>(400 kg)<br>Pure Polyurea elastomer waterproofing coating complying to ETAG, two part system | <ul style="list-style-type: none"> <li>Podium, Roof, Water &amp; Waste Water structures, Tunnels, Basements, Foundation, Concrete &amp; Steel structures</li> </ul>     | <ul style="list-style-type: none"> <li>Good Puncture Resistance</li> <li>Excellent crack bridging</li> <li>Water vapour and gas permeability</li> <li>Chemical resistance</li> </ul>   | 1.5 - 2.5 mm |

## WATERPROOFING

| Product (Product Description)   | Applications   | Features & Benefits   | Estimation                                   |
|---|--|---|--|
| <b>Expansion &amp; Construction Jointing system</b>   |  |   |  |
| <b>Vandex Expaseal W</b><br>(20mm X 10mm X 10m)<br>Expanding, delayed swell, wet-dry cycle, Sea water contact compatible hydrostatic pressure resistant Waterstop for construction joints | <ul style="list-style-type: none"> <li>Joint in concrete structure, Foundations, Raft, Slab, Retaining Walls, Water Structure, STP, Tidal construction</li> </ul>              | <ul style="list-style-type: none"> <li>High Volumetric swell and stable for several wet dry cycles</li> <li>Delayed Swell enable actual site application</li> <li>Marine, Sea Water contact compatible</li> </ul> | 1 Roll : 20mm X 10mm X 10m                   |
| <b>Vandex Flextape</b><br>(2 mm / 1mm & multiple widths)<br>High performance TPE sealing tape for movement & construction joint, approved for drinking water.                             | <ul style="list-style-type: none"> <li>Large Expansion Joints in concrete structures, Foundations, Walls, Roofs, Water structures</li> </ul>                                   | <ul style="list-style-type: none"> <li>High performance watertight sealing tape</li> <li>Highly Elastic</li> <li>Useful to install on large width expansion, movement joints.</li> </ul>                          | 2mm / 1mm in multiple widths                 |
| <b>Vandex construction joint tape</b> (30m) Roll Waterproof tape for construction joint and cracks along with other Vandex cement based coatings  | <ul style="list-style-type: none"> <li>Construction Joint in concrete structure, Foundations, Raft, Slab, Retaining Walls, Water Structure, STP, Tidal construction</li> </ul> | <ul style="list-style-type: none"> <li>Economical and safe and waterproof</li> <li>Permanently flexible</li> </ul>  | Thickness - 0.7mm, width - 180mm, Length-30m |

| <b>TREmply Built Up Roofing System</b>  |  |  |                            |
|---|--|--|----------------------------|
| <b>TREmply TPO / TPO FB</b><br>(1.2 / 1.5 / 2 mm X 1m X 30m)<br>Single ply roof membrane is an elastomeric thermoplastic polyolefin, wick resistant polyester fabric    | <ul style="list-style-type: none"> <li>Roof waterproofing for Metal, Concrete, composite decks</li> </ul>                    | <ul style="list-style-type: none"> <li>High UV resistance</li> <li>Recyclable; Asbestos free</li> <li>Reinforced with a high strength</li> <li>FM approved</li> </ul>  | 1.2 / 1.5 / 2mm X 1m X 30m |
| <b>TPO LV Adhesive</b><br>(18.9 L) Single Ply, low VOC asbestos, free solvent based contact-type bonding adhesive   | <ul style="list-style-type: none"> <li>Roof waterproofing for Metal, Concrete, composite decks. Used for TPO only</li> </ul> | <ul style="list-style-type: none"> <li>Low VOC</li> <li>Effective Bond</li> </ul>  | 19L at 3.0 Sq.m            |
| <b>TREmply KEE</b><br>(1.14 / 1.5 X 1m X 30m)<br>Single Ply Roofing Systems. A reinforced, polyester knit fabric with a proprietary hybrid thermoplastic alloy coating. | <ul style="list-style-type: none"> <li>Roof waterproofing for Metal, Concrete, composite decks</li> </ul>                    | <ul style="list-style-type: none"> <li>Excellent Tear &amp; Impact Resistance</li> <li>High UV Protection</li> <li>FM approved</li> <li>Exceeds ASTM D6754-15, Specification for Ketone Ethylene Ester (KEE) based sheet roofing.</li> </ul> | 1.14 / 1.5 X 1m X 30m      |



TREmproof® Amphibia

TREmply TPO

## FLOORING

| Product (Product Description)   | Applications  | Features & Benefits  | Estimation   |
|---|---|--|--|
| <b>FLOOR HARDENER/SEALER &amp; DENSIFIER/RESIN FLOOR FINISH</b>   |   |  |  |
| <b>Dry shake Floor hardeners</b>  |   |  |  |
| <b>Surflex</b> (25 kg)<br>Non-Metallic Floor hardener   | <ul style="list-style-type: none"> <li>• Hardens concrete; Wear resistance</li> <li>• Non-rusting materials for exterior use</li> <li>• Ready use factory-blend eliminates expensive mixing and minimises errors</li> </ul>   | <ul style="list-style-type: none"> <li>• Commercial &amp; Public buildings-Lobbies &amp; waiting rooms, corridors &amp; washrooms</li> <li>• Industrial &amp; warehouse floors</li> <li>• Auto showrooms &amp; services centres</li> </ul>   | 3.0 to 7.0 kg/m <sup>2</sup>                         |
| <b>Surflex E</b> (25 kg)<br>Non-Metallic, Emery Floor Hardener  | <ul style="list-style-type: none"> <li>• Hardens concrete; Wear resistance</li> <li>• Non-rusting materials for exterior use</li> <li>• Ready use factory-blend eliminates expensive mixing and minimises errors</li> </ul>   | <ul style="list-style-type: none"> <li>• Commercial &amp; Public buildings-Lobbies &amp; waiting rooms, corridors &amp; washrooms; Restaurants</li> <li>• Industrial &amp; warehouse floors; Dairies</li> <li>• Auto showrooms &amp; services centres</li> </ul>   | 4.9 – 12 kg/m <sup>2</sup>                           |
| <b>Eucoplate-HD</b> (25 kg)<br>Heavy Duty Metallic Floor Hardener   | <ul style="list-style-type: none"> <li>• 8 times increased abrasion resistance</li> <li>• Iron aggregate is free of rust, oil, or other contaminants</li> <li>• Dense surface resists penetration of oil, grease, and many other liquids</li> <li>• Virtually non-dusting in service</li> <li>• Easy to clean and maintain</li> </ul> | <ul style="list-style-type: none"> <li>• Industrial floors; Distribution centers</li> <li>• Loading docks; Warehouses, High traffic aisleways</li> <li>• Processing plants</li> <li>• Passenger and freight terminals</li> <li>• Towveyors; Iron armored joints</li> </ul>                                       | 7 -14 kg/m <sup>2</sup>                              |
| <b>Liquid Densifiers</b>  |   |  |  |
| <b>Euco Diamond Hard</b><br>(20 & 230 kg)<br>Liquid Densifier and Sealer For Concrete (Blend of Silicate & silicate polymers) | <ul style="list-style-type: none"> <li>• Reduces porosity &amp; increases durability</li> <li>• Complies with VOC regulations</li> <li>• Treated surfaces have increased liquid repellency</li> <li>• Minimizes tire marks &amp; easy to clean</li> <li>• Can be applied to new or existing concrete</li> </ul>                       | <ul style="list-style-type: none"> <li>• Warehouse floors; Manufacturing Plants</li> <li>• Commercial and retail floors</li> <li>• Distribution centers</li> <li>• Polished concrete</li> </ul>  | 4.1 -5.1 m <sup>2</sup> /kg                          |
| <b>Eucosil</b> (20 & 230 kg)<br>Water based Liquid Densifier For Concrete Surfaces  | <ul style="list-style-type: none"> <li>• Seals, densifies and dustproofs</li> <li>• Water based; No odor</li> <li>• Treated concrete resists penetration of water</li> <li>• Can be tiled over; Zero VOC's</li> </ul>   | <ul style="list-style-type: none"> <li>• Interior or exterior horizontal concrete</li> <li>• Educational and medical facilities</li> <li>• Office and multi-residential buildings</li> <li>• Warehouse floors; Food storage areas</li> </ul>   | 4.1 -5.1 m <sup>2</sup> /kg                          |
| <b>Surfhard</b> (20 & 210 kg)<br>Water based Liquid Densifier and Dustproof For Concrete (Magnesium Fluorosilicate solution)  | <ul style="list-style-type: none"> <li>• Densifies and dustproofs concrete surfaces</li> <li>• Prolongs floor life; Chemical resistant</li> <li>• Improves concrete that is carbonated, soft, or powdery</li> <li>• Can be used without production interruption</li> </ul>  | <ul style="list-style-type: none"> <li>• Concrete floors, especially those with carbonated, soft or dusting surfaces</li> <li>• Industrial floors</li> <li>• Commercial buildings; Schools</li> <li>• Residential basements</li> </ul>   | Refer TDS for mix ratio, 4.9 -7.4 m <sup>2</sup> /kg |
| <b>UltraGuard</b> (20 L & 210 L )<br>Protectant and Densifier for Concrete Floors   | <ul style="list-style-type: none"> <li>• Can provide instant gloss to concrete floors</li> <li>• Water-based, low odor &amp; low VOC content</li> <li>• Treated concrete is more dense, durable &amp; easy to maintain; Breathable</li> <li>• Protects colored or dyed concrete from UV degradation</li> </ul>                        | <ul style="list-style-type: none"> <li>• Interior concrete floors</li> <li>• Commercial and retail floors</li> <li>• Distribution centers</li> <li>• Institutional floors; Schools</li> <li>• Health care facilities</li> </ul>  | 12- 25 m <sup>2</sup> /L                             |
| <b>UltraSil Li+</b> (20 & 230 kg)<br>Liquid Densifier, Sealer and Dustproof For Concrete                                      | <ul style="list-style-type: none"> <li>• Seals, densifies and dustproofs concrete in one operation</li> <li>• Water-based; no VOCs</li> <li>• Treated concrete more dense and durable</li> <li>• Permanent treatment that never peels off</li> <li>• Easy to maintain</li> </ul>  | <ul style="list-style-type: none"> <li>• Interior concrete floors</li> <li>• Commercial and retail floors</li> <li>• Warehouse floors; Distribution centers</li> <li>• Manufacturing plants; Institutional floors</li> <li>• Transportation terminals;</li> <li>• Health care facilities; Clean rooms</li> </ul> | 5 to 10 m <sup>2</sup> /kg                           |
| <b>Pro-Polish Guard</b> (20 L & 200L )<br>Protectant for polished concrete floors   | <ul style="list-style-type: none"> <li>• Clear, Protective treatment that helps to prevent stain and dirt intrusion on polished, dyed, concrete floors</li> </ul>   | <ul style="list-style-type: none"> <li>• Water based, low odor</li> <li>• Increases reflectiveness and shine with no buffing required</li> <li>• Breathable</li> <li>• Treated concrete is easier to maintain</li> <li>• Intensifies colored/dyed concrete and protects from UV degradation</li> </ul>           | 12- 17 m <sup>2</sup> /L                             |



## FLOORING



Surflex

Penetrating Sealers

| Product (Product Description)   | Applications   | Features & Benefits   | Estimation  |
|---|--|---|---|
| <b>Penetrating Sealers</b>  |  |   |   |
| <b>Barcade Silane 100 C</b><br>(20L & 200 L)<br>100% silane, High Performance water repellent                                 | <ul style="list-style-type: none"> <li>Sidewalks</li> <li>Ramps</li> <li>Parking decks</li> <li>Bridge decks</li> </ul>  | <ul style="list-style-type: none"> <li>Reduces water absorption</li> <li>Protects against air-borne contaminants (acid rain)</li> <li>Protects concrete against the damages of water intrusion and deicing chemicals</li> <li>Will not etch glass</li> </ul>  | 6.14 to 9.82m <sup>2</sup> / L / per coat                                     |
| <b>Barcade Silane 40</b><br>(20 L & 200 L)<br>Silane based water repellent  | <ul style="list-style-type: none"> <li>Sidewalks &amp; ramps; parking decks</li> <li>Exposed aggregate; Industrial Floors</li> <li>Precast, prestressed &amp; poured in place concrete ; Bridge decks</li> <li>Lightweight &amp; air entrained concrete</li> </ul> | <ul style="list-style-type: none"> <li>Breathable, ready to use, colorless</li> <li>Non-staining, non-yellowing, deep penetrating concrete and masonry water repellent compound</li> <li>Water and salt repellent for concrete pavement and floors; Low VOC, low odor</li> </ul>                      | Smooth concrete 3.68 – 6.14 m <sup>2</sup> /L/coat                            |
| <b>Barcade WB 244</b> (20 L 200 L)<br>Water based, Penetrating water repellent for horizontal surfaces                        | <ul style="list-style-type: none"> <li>Sidewalks</li> <li>Parking decks, Ramps, Walls</li> <li>Bridge decks</li> <li>Industrial floors</li> </ul>  | <ul style="list-style-type: none"> <li>Low VOC content</li> <li>Breathable</li> <li>Non film-forming; leaves no gloss or shine</li> <li>Can contribute to LEED points</li> </ul>  | 2.45 to 3.68 m <sup>2</sup> /L /per coat.                                     |
| <b>Chemstop WB Regular, HEAVY DUTY</b> (20L & 200 L)<br>Water based silane/siloxane Penetrating Water Repellent               | <ul style="list-style-type: none"> <li>Concrete, Concrete block, Lightweight concrete</li> <li>Brick, Mortar joints</li> <li>Precast structures</li> <li>Horizontal or vertical</li> <li>Interior or exterior</li> </ul>   | <ul style="list-style-type: none"> <li>Allows concrete/masonry repel water and salts</li> <li>Colorless &amp; odorless</li> <li>Non-staining, non-yellowing, breathable</li> <li>Reduces efflorescence and spalling</li> <li>Can contribute to LEED points</li> </ul>                                 | 2.00 to 3.7 m <sup>2</sup> / L / per coat.                                    |
| <b>Chemstop WB Regular</b><br>(20L & 200 L)<br>Weatherproofing Siloxane Sealer  | <ul style="list-style-type: none"> <li>Parking structures</li> <li>Lane barriers &amp; ramps</li> <li>Bridges &amp; Marine platforms</li> <li>Auto/truck repair bays</li> <li>Exterior concrete surfaces</li> </ul>  | <ul style="list-style-type: none"> <li>Provides an continuous chloride barrier</li> <li>Blocks pores &amp; capillaries for outstanding water repellency</li> <li>Extremely high alkali resistance</li> <li>Protects reinforcing steel against the corrosive effects</li> </ul>                        | 3.1 to 3.7 m <sup>2</sup> / L / per coat.                                     |
| <b>Weather-Guard</b> (20L & 200 L)<br>Economical solvent based siloxane   | <ul style="list-style-type: none"> <li>Concrete and masonry block, Clay brick</li> <li>Natural stone, Brick facings</li> <li>Precast concrete</li> <li>Exposed aggregate, Stucco</li> <li>Architectural concrete</li> </ul>  | <ul style="list-style-type: none"> <li>Deep penetrating pore action for long lasting protection</li> <li>Highly efficient barrier (water &amp; salt ingress)</li> <li>Allows concrete and masonry surfaces to maintain breathability while providing high water repellency characteristics</li> </ul> | 2.45 to 3.68 m <sup>2</sup> / L / per coat.                                   |
| <b>Barcade M.E.</b> (20L & 200 L)<br>Concentrated siloxane water repellent  | <ul style="list-style-type: none"> <li>Precast &amp; prestressed, Bridge Decks</li> <li>Above grade</li> <li>Exposed aggregate, Industrial floors</li> <li>Poured-in-place, Concrete block</li> <li>Sidewalks, Ramps, Parking decks</li> </ul>                     | <ul style="list-style-type: none"> <li>Breathable, non-staining, colorless</li> <li>Seal out surface moisture, reduce efflorescence</li> <li>Minimize effects of freeze-thaw cycles</li> <li>Resistance to smog &amp; air pollutants</li> </ul>   | 2.9 to 4.20 m <sup>2</sup> / L / per coat.                                    |
| <b>Euco-Guard 100</b><br>Solvent based, Siloxane water and Chloride Repellent for Concrete & Masonry meets NCHRP 244 criteria | <ul style="list-style-type: none"> <li>Parking structures, Lane barriers &amp; ramps</li> <li>Bridges &amp; Marine platforms</li> <li>Auto/truck repair bays</li> <li>Suitable to new or old, dry or damp(not-saturated) concrete</li> </ul>                       | <ul style="list-style-type: none"> <li>Efficient, continuous chloride barrier; high alkali resistance</li> <li>Blocks pores and capillaries for outstanding water repellency</li> <li>Protects reinforcing steel against the corrosive effects</li> <li>No Surface scaling in new concrete</li> </ul> | Smooth: 3.1 to 3.7 m <sup>2</sup> /L<br>Textured: 1.8 to 3.1m <sup>2</sup> /L |

## FLOORING

| Product (Product Description)   | Applications  | Features & Benefits  | Estimation   |
|---|---|--|--|
| <b>INDUSTRIAL FLOORING</b>  |   |  |  |
| <b>Primer &amp; Damp Proof Membrane</b>   |   |  |  |
| <b>Flowprime</b> (10 kg)<br>2 Component, Epoxy resin based primer   | <ul style="list-style-type: none"> <li>Priming of Concrete and screeds prior to application of resin system.</li> </ul>   | <ul style="list-style-type: none"> <li>Good adhesion to concrete</li> <li>Fast film cure and overcoat time</li> <li>Good corrosion resistance</li> <li>Good low temperature cure</li> </ul>                            | Approx.0.25 kg/m <sup>2</sup> . 2 Coats for porous substrate |
| <b>Flowprime M</b> (10 kg)<br>2 Component, Aluminium pigmented high solids epoxy primer                             | <ul style="list-style-type: none"> <li>Priming of Metal substrates prior to application of resin system</li> </ul>  | <ul style="list-style-type: none"> <li>Good adhesion to metal</li> <li>Fast film cure and overcoat time</li> <li>Good corrosion resistance</li> <li>Good low temperature cure</li> </ul>                               | Approx.0.25 kg/m <sup>2</sup>                                |
| <b>Flowprime SB</b> (10 kg)<br>2 Component, Epoxy resin based low viscous primer                                    | <ul style="list-style-type: none"> <li>Penetrating solvent borne primer for porous substrate like screed before application of resin system</li> </ul>                  | <ul style="list-style-type: none"> <li>Good adhesion to porous substrate or screed</li> <li>Fast film cure and overcoat time</li> <li>Good corrosion resistance</li> <li>Good low temperature cure</li> </ul>          | Approx.0.2 kg/m <sup>2</sup>                                 |
| <b>Flowseal EPW Primer</b> (10 kg)<br>2 Component, Water based epoxy primer   | <ul style="list-style-type: none"> <li>Priming of damp concrete substrate prior to application of damp proof membrane</li> </ul>  | <ul style="list-style-type: none"> <li>No odour with excellent adhesion</li> <li>Damp tolerant-100% (no free standing water)</li> <li>Cement compatible and stable</li> <li>Long pot life-1 hour</li> </ul>            | Approx. 0.25 kg/m <sup>2</sup>                               |
| <b>Hydraseal DPM</b> (10 kg)<br>2 Component, Solvent & water free, liquid applied epoxy surface damp proof membrane | <ul style="list-style-type: none"> <li>Allows quick installation of moisture sensitive floor finishes onto substrates with a moisture content up to 100% RH.</li> </ul> | <ul style="list-style-type: none"> <li>Combats moisture(100% RH) in concrete / screed substrate</li> <li>Time Saving; Easy to apply</li> <li>Excellent adhesion to concrete or screed</li> <li>Solvent Free</li> </ul> | Approx.0.2 kg/m <sup>2</sup>                                 |

| <b>Floor Sealer and Coating</b>  |   |   |                                     |
|--|---|---|-------------------------------------|
| <b>Flowseal EPW Colour</b> (10 kg)<br>2 Component, Pigmented water based epoxy sealer                                  | <ul style="list-style-type: none"> <li>Non-dusting environment</li> <li>Light industrial areas, store rooms and areas of pedestrian traffic</li> </ul>                                      | <ul style="list-style-type: none"> <li>Easy to clean and maintain</li> <li>Solvent Free</li> <li>Breathable</li> <li>Non-dusting</li> </ul>   | Approx.0.2 kg/m <sup>2</sup> /Coat  |
| <b>Flowseal UV (Clear / Glossy / Matt / Satin)</b> (5 kg)<br>2 Component, Aliphatic, Solvent based polyurethane sealer | <ul style="list-style-type: none"> <li>Can be applied on concrete, screed or resin system</li> </ul>  | <ul style="list-style-type: none"> <li>Seamless</li> <li>UV Resistance</li> <li>Hard Wearing</li> <li>Non-dusting</li> </ul>  | Approx. 0.2 kg/m <sup>2</sup> /Coat |
| <b>Flowseal PU 402</b> (5 kg)<br>1 Component, Polyurethane floor sealer  | <ul style="list-style-type: none"> <li>For concrete, wooden or metal floor</li> <li>Also protective liner for shutter boards</li> </ul>   | <ul style="list-style-type: none"> <li>Floor Hardening and Anti-dusting sealer for concrete, wooden or metal floor</li> <li>Protective liner for shutter board</li> </ul>   | Approx.0.15 kg/m <sup>2</sup> /Coat |
| <b>Flowseal Ultra</b> (5 kg)<br>2 Component, Solvent free polyaspartic based sealer                                    | <ul style="list-style-type: none"> <li>Sacrificial coat on resin system for high abrasion resistance.</li> </ul>  | <ul style="list-style-type: none"> <li>Fast Cure, Gloss</li> <li>Clear or Pigmented</li> <li>High Abrasion and chemical Resistance</li> <li>UV light stable</li> </ul>  | Approx.0.2 kg/m <sup>2</sup> /Coat  |
| <b>Flowcoat HS</b> (10 kg)<br>2 Component, High performance epoxy based coating  | <ul style="list-style-type: none"> <li>Factories, warehouses, plants and storerooms.</li> </ul>   | <ul style="list-style-type: none"> <li>Good Chemical &amp; abraion Resistance</li> <li>Solvent Free, low odour</li> <li>Hygienic and Easy to Clean</li> <li>Hard-Wearing</li> </ul>                                       | Approx.0.3 kg/m <sup>2</sup> /Coat  |
| <b>Flowcoat HTS</b> (5 kg)<br>2 Component, Very high performance, UV stable polyurethane coating                       | <ul style="list-style-type: none"> <li>Heavy traffic areas like loading docks, warehouses, high traffic aisles, amongst others.</li> </ul>  | <ul style="list-style-type: none"> <li>High Abrasion Resistance</li> <li>Good Chemical Resistance</li> <li>UV Light Stable and Slip Resistance</li> <li>Hygienic and Easy to clean</li> </ul>                             | Approx.0.2 kg/m <sup>2</sup> /Coat  |
| <b>Flowcoat OP</b> (10 kg/20 kg)<br>2 Component, Epoxy based, Orange peel coating finish                               | <ul style="list-style-type: none"> <li>Factories, warehouses, plants and storerooms</li> </ul>  | <ul style="list-style-type: none"> <li>Enhanced slip resistance</li> <li>Hygienic &amp; Easy to Clean</li> <li>Hard wearing ; Solvent free</li> <li>Chemical resistant</li> </ul>   | Approx.0.3 kg/m <sup>2</sup> /Coat  |
| <b>Flowcoat SF 41</b> (10 kg)<br>2 Component, High build, Epoxy coating  | <ul style="list-style-type: none"> <li>Hard-wearing coloured floor coating in areas such as factories, warehouses, storerooms, plantrooms, light production &amp; process areas.</li> </ul> | <ul style="list-style-type: none"> <li>Chemical &amp; abrasion Resistance</li> <li>Solvent Free; Low odour; Hygienic</li> <li>Light reflectant appearance</li> <li>Different grade of slip resistance achieved</li> </ul> | Approx.0.3 kg/m <sup>2</sup> /Coat  |

## FLOORING

| Product (Product Description)   | Applications   | Features & Benefits  | Estimation                         |
|---|--|--|------------------------------------|
| <b>Floor Sealer and Coating</b>   |  |  |                                    |
| <b>Flowcoat LXP</b> (10 kg)<br>2 Component, Solvent free, polyurethane coating              | <ul style="list-style-type: none"> <li>Flexible coloured floor coating in areas on a variety of substrates such as concrete, wood, metal and asphalt.</li> </ul>     | <ul style="list-style-type: none"> <li>Flexible and anti-skid(optional)</li> <li>Abrasion and Impact Resistance</li> <li>Flexible &amp; light reflectant surface</li> <li>Seamless and hygienic finish</li> </ul>        | Approx.0.5 kg/m <sup>2</sup> /Coat |
| <b>Flowcoat CT</b> (10 kg)<br>2 Component, Solvent free, High build, Coal tar epoxy coating | <ul style="list-style-type: none"> <li>Underground structure, concrete and steel surfaces in sewage treatment plant, chemical plant and steel structures.</li> </ul> | <ul style="list-style-type: none"> <li>Anti-corrossive protective coating</li> <li>Suitable for varities of substrates like concrete and steel surfaces</li> <li>Specially suitable for underground structure</li> </ul> | Approx.0.20kg/m <sup>2</sup> /Coat |

| <b>Underlayment/Dry Screed/Coving</b>   |  |   |                                   |
|---|--|---|-----------------------------------|
| <b>Flowshield SL UL</b> (20 kg)<br>3 Component, Self-smoothing, Epoxy underlayment  | <ul style="list-style-type: none"> <li>Dry process areas with heavy traffic Laboratories, clean rooms, warehouses and storage areas in Industrial environment</li> </ul>                               | <ul style="list-style-type: none"> <li>Self-smoothing underlayment for resin overlay</li> <li>Non-taintint and non-dusting</li> <li>Abrasion resistant</li> <li>High Chemical resistance grade available</li> </ul>                   | Approx 3.6 kg/m <sup>2</sup> /2mm |
| <b>Flowcem</b> (20 kg)<br>3 Component, Self-smoothing, Epoxy-cement composite   | <ul style="list-style-type: none"> <li>As a breathable moisture vapour barrier to be overlaid with resin flooring finishes on substrates which do not have an effective damp proof membrane</li> </ul> | <ul style="list-style-type: none"> <li>Moisture barrier for substrates with high residual moisture content</li> <li>Excellent Adhesion</li> <li>Easy to Apply</li> <li>Low Odour</li> </ul>   | Approx.4 kg/m <sup>2</sup> /2mm   |
| <b>Flowtex PT(4-6mm)</b> (33 kg)<br>3 Component, Power trowel applied epoxy screed  | <ul style="list-style-type: none"> <li>Heavy duty underlayment for resin floor finishes for areas of high traffic, impact &amp; chemical spills in dry and wet environment</li> </ul>                  | <ul style="list-style-type: none"> <li>High Impact Resistance</li> <li>Chemical Resistance</li> <li>Solvent Free</li> <li>Minimizes undulations</li> </ul>  | Approx.2.1 kg/m <sup>2</sup> /mm  |
| <b>Flowtex HT(6-8mm)</b> (35 kg)<br>3 Component, Hand trowel applied epoxy screed   | <ul style="list-style-type: none"> <li>Wet and dry industrial, commercial and institutional environments subjected to high traffic, impact &amp; chemical spills</li> </ul>                            | <ul style="list-style-type: none"> <li>High Chemical &amp; Impact Resistance</li> <li>Produce extremely smooth screed Solvent Free; low odour</li> <li>Minimizes undulations</li> </ul>   | Approx.2.1 kg/m <sup>2</sup> /mm  |
| <b>Flowtex TQ (5mm)</b> (35 kg)<br>4 Component, Multilayer epoxy decorative screed (made up of colour stable quartz granules) | <ul style="list-style-type: none"> <li>Wet and dry process areas where the floor is subject to heavy traffic, impact and chemical spills</li> </ul>  | <ul style="list-style-type: none"> <li>Minimizes visible scratches</li> <li>Attractive and decorative finish</li> <li>Very hard-wearing, hygienic and easy to clean</li> <li>High Chemical, abrasion and impact resistance</li> </ul> | Approx.8 kg/m <sup>2</sup> /5mm   |
| <b>Flowtex F1 Coving Mortar</b> (35 kg)<br>3 component, Solvent free epoxy resin based coving mortar                          | <ul style="list-style-type: none"> <li>Suitable to form coved skirtings. Can be feathered down to mim 1mm thickness</li> </ul>   | <ul style="list-style-type: none"> <li>High bond strength</li> <li>Used to form coved skirtings</li> <li>Low odour; Solvent free</li> <li>Can be feathered down to a minimum thickness of 1 mm</li> </ul>                             | As per coving size.               |

| <b>Self-Smoothing Epoxy and Polyurethane Topping</b>   |  |   |   |
|--|--|---|---|
| <b>Flowshield SL (0.5mm)</b> (14 kg)<br>4 Component, High gloss, Self-smoothing epoxy floor finish | <ul style="list-style-type: none"> <li>Typical uses include clean rooms, laboratories, warehouses &amp; storage area Maintenance coating on top of existing resin floor finish.</li> </ul>             | <ul style="list-style-type: none"> <li>Hard Wearing and suitable for maintenance coating</li> <li>USDA/FDA compliant</li> <li>Suitable for CSM®(Cleanroom Suitable Materials) requirements</li> <li>Solvent free; Hygienic &amp; easy to clean</li> </ul> | Approx 0.8 kg/m <sup>2</sup> (For non-porous substrate) |
| <b>Flowshield SL (1mm)</b> (16 kg)<br>4 Component, High gloss, Self-smoothing, epoxy floor finish  | <ul style="list-style-type: none"> <li>Dry process areas (medium duty traffic) include clean rooms, laboratories, warehouses and storage areas in Industrial environment.</li> </ul>                   | <ul style="list-style-type: none"> <li>Hard Wearing; Solvent free</li> <li>USDA/FDA compliant</li> <li>Suitable for CSM®(Cleanroom Suitable Materials) requirements</li> <li>Hygienic and easy to clean</li> </ul>  | Approx.1.6 kg/m <sup>2</sup>                            |
| <b>Flowshield SL (2mm)</b> (20 kg)<br>4 Component, High gloss, Self-smoothing epoxy floor finish   | <ul style="list-style-type: none"> <li>Dry process areas (medium to heavy duty traffic) include clean rooms, laboratories, warehouses and storage areas specially in Industrial environment</li> </ul> | <ul style="list-style-type: none"> <li>Hard Wearing and suitable for maintenance coating</li> <li>USDA/FDA compliant; Solvent free</li> <li>Suitable for CSM® (Cleanroom Suitable Materials) requirements</li> <li>Hygienic and easy to clean</li> </ul>  | Approx 3.6 kg/m <sup>2</sup>                            |

## FLOORING

| Product (Product Description)   | Applications  | Features & Benefits  | Estimation                   |
|---|---|--|------------------------------|
| <b>Self-Smoothing Epoxy and Polyurethane Topping</b>  |   |  |                              |
| <b>Flowshield Quartz (2mm)</b><br>(20 kg)<br>4 Component, Decorative, Self-smoothing "liquid-vinyl" epoxy resin flooring system   | <ul style="list-style-type: none"> <li>Dry, light industrial, commercial and institutional floors requiring a decorative but durable industrial floor performance</li> </ul>                            | <ul style="list-style-type: none"> <li>Decorative and hard wearing</li> <li>Scratch and abrasion resistant</li> <li>Non-tainting and non-dusting</li> <li>Solvent free and good chemical resistance</li> <li>Hygienic and easy to clean</li> </ul> | Approx.3.6 kg/m <sup>2</sup> |
| <b>Flowshield LXP (1.5mm)</b><br>(10 kg)<br>2 Component, Solvent-free, Self-smoothing high performance polyurethane floor finish  | <ul style="list-style-type: none"> <li>Typically used in manufacturing and packaging areas subject to heavy foot and pallet truck traffic. Use on substrate such as concrete, wood and metal</li> </ul> | <ul style="list-style-type: none"> <li>Flexible</li> <li>High Impact Resistance</li> <li>Solvent free and good chemical resistance</li> <li>Hygienic and easy to clean</li> </ul>  | Approx.2.4 kg/m <sup>2</sup> |
| <b>Flowshield LXP HD (3mm)</b><br>(15 kg)<br>3 Component, Solvent-free, Self-smoothing high performance polyurethane floor finish | <ul style="list-style-type: none"> <li>Use over asphalt, wood, steel and concrete. Heavy traffic area &amp; where a degree of flexing of the floor is expected</li> </ul>                               | <ul style="list-style-type: none"> <li>Flexible</li> <li>High Impact Resistance</li> <li>Solvent free and good chemical resistance</li> <li>Hygienic and easy to clean</li> </ul>  | Approx.5.4 kg/m <sup>2</sup> |
| <b>Flowshield PU</b> (18 kg)<br>4 Component, Pigmented, Self-smoothing polyurethane screed resin floor finish                     | <ul style="list-style-type: none"> <li>Areas requiring chemical resistance, durability and impact resistance<br/>Vehicle workshops, engineering factories and garages</li> </ul>                        | <ul style="list-style-type: none"> <li>Chemical and abrasion Resistance</li> <li>Non dusting; Non-Tainting ;Low odour</li> <li>Hard-Wearing and Fast return to service</li> <li>Hygienic and easy to clean</li> </ul>                              | Approx.3.6 kg/m <sup>2</sup> |

| <b>Chemical Resistance Flooring</b>  |  |   |                                    |
|--|--|---|------------------------------------|
| <b>Flowcoat CR</b> (10 kg)<br>2 Component, Solvent free, High performance epoxy resin coating  | <ul style="list-style-type: none"> <li>Coloured floor coating - processing, manufacturing, packaging, testing and warehouses subjected to chemical spillages.</li> </ul>   | <ul style="list-style-type: none"> <li>High Chemical and abrasion Resistance</li> <li>Solvent Free; Low odour</li> <li>Hard wearing; Slip resistant</li> <li>Hygienic and easy to clean</li> </ul>                          | Approx.0.3 kg/m <sup>2</sup> /Coat |
| <b>Flowcoat UCR</b> (10 kg)<br>3 Component, Solvent free, Novolac epoxy resin coating with extremely high chemical resistance                  | <ul style="list-style-type: none"> <li>Typical uses are processing, manufacturing, packaging and chemical storage areas subject to heavy foot and pallet truck traffic.</li> </ul>                                       | <ul style="list-style-type: none"> <li>Extremely high Chemical Resistance</li> <li>Solvent Free; Low odour</li> <li>Hard wearing; Light reflectant appearance</li> <li>Hygienic and slip resistant finish</li> </ul>        | Approx.0.3 kg/m <sup>2</sup> /Coat |
| <b>Flowshield CR (1mm)</b> (10 kg)<br>4 Component, High chemical resistance, Self-smoothing epoxy resin flooring system                        | <ul style="list-style-type: none"> <li>Dry process areas subject to high chemical spillages, hard-wearing for medium to heavy traffic (chemical storage areas, laboratories, warehouses and printing plants).</li> </ul> | <ul style="list-style-type: none"> <li>High Chemical and abrasion Resistance</li> <li>USDA/FDA Compliant</li> <li>Non -tainting, non-dusting, hard wearing</li> <li>Hygienic and easy to clean</li> </ul>                   | Approx.1.6 kg/m <sup>2</sup>       |
| <b>Flowshield CR (2mm)</b> (20 kg)<br>4 Component, High chemical resistance, Self-smoothing epoxy resin flooring system                        | <ul style="list-style-type: none"> <li>Dry process areas subject to high chemical spillages, hard-wearing for medium to heavy traffic (chemical storage areas, laboratories, warehouses and printing plants).</li> </ul> | <ul style="list-style-type: none"> <li>High Chemical and abrasion Resistance</li> <li>USDA/FDA Compliant</li> <li>Non -tainting, non-dusting, hard wearing</li> <li>Hygienic and easy to clean</li> </ul>                   | Approx.3.6 kg/m <sup>2</sup>       |
| <b>Flowshield UCR 1000</b> (10 kg)<br>4 Component, Solvent free, self-smoothing novolac epoxy floor finish.                                    | <ul style="list-style-type: none"> <li>Areas subject to heavy foot and pallet truck traffic (Pharmaceutical, electronic, aerospace, automotive and printing plants).</li> </ul>  | <ul style="list-style-type: none"> <li>Extremely high chemical resistance</li> <li>Attractive, enhances working environment</li> <li>Hygienic and easy to clean</li> <li>Non-tainting, non-dusting; Hard wearing</li> </ul> | Approx.1.6 kg/m <sup>2</sup>       |
| <b>Flowcoat SK</b> (10 kg)<br>2 Component, Solvent free, Hydraulic and Skydrol® resistance coating.  | <ul style="list-style-type: none"> <li>Used in aircraft hangars, aircraft, parking areas and workshops</li> </ul>  | <ul style="list-style-type: none"> <li>Skydrol®/Jet Fuel Resistant</li> <li>Solvent Free; Non Slip finish</li> <li>Hard-Wearing</li> <li>Hygienic and easy to clean</li> </ul>  | Approx.0.3 kg/m <sup>2</sup> /Coat |
| <b>Flowshield SK (1mm)</b> (16 kg)<br>4 Component, Solvent free, High build epoxy self-smoothing system (resistance to hydraulic and Skydrol®) | <ul style="list-style-type: none"> <li>Used in aircraft hangars, aircraft parking areas and workshops subject to medium duty area</li> </ul>   | <ul style="list-style-type: none"> <li>Skydrol®/Jet Fuel, hydraulic fluids Resistant</li> <li>Solvent Free; Low odour</li> <li>Hard-Wearing</li> <li>Hygienic and easy to clean</li> </ul>                                  | Approx.1.6 kg/m <sup>2</sup>       |
| <b>Flowshield SK (2mm)</b> (20 kg)<br>4 Component, Solvent free, High build epoxy self-smoothing system (resistance to hydraulic and Skydrol®) | <ul style="list-style-type: none"> <li>Used in aircraft hangars, aircraft parking areas and workshops subject to medium to heavy duty area</li> </ul>  | <ul style="list-style-type: none"> <li>Skydrol®/Jet Fuel, hydraulic fluids Resistant</li> <li>Solvent Free; Low odour</li> <li>Hard-Wearing</li> <li>Hygienic and easy to clean</li> </ul>                                  | Approx.3.6 kg/m <sup>2</sup>       |

## FLOORING

| Product (Product Description)   | Applications  | Features & Benefits   | Estimation                         |
|---|---|---|------------------------------------|
| <b>Corrosion Protection System</b>  |   |   |                                    |
| <b>Flowchem VE RC</b> (20 kg)<br>2 Component, "shrink-free" Vinyl Ester Coating (Applied between 0.5 and 1mm thick)                               | <ul style="list-style-type: none"> <li>Protection of concrete walls, floors, kerbs, equipment bases, trenches and drains against aggressive chemicals, solvents and mechanical plus thermal attack in heavy duty areas</li> </ul> | <ul style="list-style-type: none"> <li>High Abrasion and UV Resistance</li> <li>Excellent Thermal (upto 145°C) &amp; chemical resistant</li> <li>Fast curing – usually walk on within 12 hours and UV Resistance</li> <li>Hygienic and easy to clean</li> </ul>       | Approx.0.3 kg/m <sup>2</sup> /Coat |
| <b>Flowchem VE GL (2 to 3mm)</b> (20 kg)<br>2 Component, Roller or Spray applied vinyl ester, Fiber glass reinforced coating system               | <ul style="list-style-type: none"> <li>Protection against aggressive chemicals, thermal and mechanical stress (in Concrete &amp; steel Structures)</li> </ul>   | <ul style="list-style-type: none"> <li>Extremely hard wearing</li> <li>Excellent Thermal (upto 165°C), high abrasion &amp; Chemical resistant</li> <li>Fast curing – walk on within 12 hours and UV Resistance</li> <li>Hygienic and easy to clean</li> </ul>         | Approx.3.4 kg/m <sup>2</sup> /2mm  |
| <b>Flowchem VE V-05/H-05 (5mm)</b> (20 kg)<br>2 Component, Vertical/horizontal trowel applied "shrink-free" vinyl ester resin based render system | <ul style="list-style-type: none"> <li>For protection of concrete floors/ walls, kerbs, equipment bases, trenches and drains against aggressive chemicals, solvents and thermal attack in medium duty areas.</li> </ul>           | <ul style="list-style-type: none"> <li>Excellent thermal (upto 160°C)</li> <li>Resistant to thermal shock</li> <li>Excellent abrasion, chemical &amp; good impact resistance</li> <li>Fast curing, minimum downtime</li> <li>Non-shrink, imposes no stress</li> </ul> | Approx.1.7 kg/m <sup>2</sup> /mm   |



| <b>Anti-Static Flooring</b>  |  |   |                                    |
|--|--|---|------------------------------------|
| <b>Flowprime ESD Conductive</b> (10 kg)<br>2 Component, Water based, conductive epoxy Primer         | <ul style="list-style-type: none"> <li>Used within electrostatic conductive or dissipative resin floor system.</li> </ul>  | <ul style="list-style-type: none"> <li>Conductive Primer used within electrostatic dissipative flooring</li> <li>Solvent Free; Odour less</li> <li>Provides electrical continuity under ESD resin toppings and to earthing point</li> </ul>           | Approx.0.25 kg/m <sup>2</sup>      |
| <b>Flowcoat ESD Conductive</b> (5 kg/10 kg)<br>2 Component, Solvent free, Anti-static Epoxy Coating  | <ul style="list-style-type: none"> <li>For use in light to medium duty traffic areas (where conductive ESD standards are required)</li> </ul>  | <ul style="list-style-type: none"> <li>Anti-Static &amp; Hard Wearing</li> <li>Low Odour</li> <li>High Chemical Resistance</li> <li>Meets ANSI/ESD S2020 and ASTM F150 Conductive requirements.</li> </ul>  | Approx.0.3 kg/m <sup>2</sup> /Coat |
| <b>Flowcoat Dielectric</b> (10 kg)<br>2 Component, Solvent free, High build Dielectric epoxy Coating | <ul style="list-style-type: none"> <li>Hard-wearing coloured floor coating in areas such as high voltage sub-stations-switchgear panels, VCB's ,battery rooms, marshalling box flooring</li> </ul> | <ul style="list-style-type: none"> <li>Ultra High Dielectric Strength and insulation resistance</li> <li>Tough wear and weather resistant</li> <li>Excellent chemical resistance</li> <li>High build Adhesion</li> </ul>                              | Approx.0.3 kg/m <sup>2</sup> /Coat |
| <b>Flowshield ESD SL (1mm)</b> (16 kg)<br>Antistatic, Self-Smoothing epoxy floor coating             | <ul style="list-style-type: none"> <li>Suitable for use in medium duty traffic areas (where conductive ESD standards are required)</li> </ul>  | <ul style="list-style-type: none"> <li>Meets ASTM F150-06, IEC 61340-4-1, ANSI/ESD S2020 and IEC 61340-4-5 conductive requirements</li> <li>Hygienic &amp; easy to clean; Hard wearing</li> <li>Non-tainting &amp; non-dusting; Attractive</li> </ul> | Approx.1.6 kg/m <sup>2</sup>       |

## FLOORING

| Product (Product Description)   | Applications  | Features & Benefits   | Estimation                          |
|---|---|---|-------------------------------------|
| <b>Anti-Static Flooring</b>   |   |   |                                     |
| <b>Flowshield ESD SL (2mm)</b><br>(20 kg)<br>Antistatic, Self-Smoothing epoxy floor finish  | <ul style="list-style-type: none"> <li>Suitable for use in medium to heavy duty traffic areas (where conductive ESD standards are required)</li> </ul>  | <ul style="list-style-type: none"> <li>Meets ASTM F150-06, IEC 61340-4-1, ANSI/ESD S2020 and IEC 61340-4-5 conductive requirements</li> <li>Hygienic &amp; easy to clean; Hard wearing</li> <li>Non-tainting &amp; non-dusting; Attractive</li> </ul>   | Approx. 3.6 kg/m <sup>2</sup>       |
| <b>Flowshield ESD Quartz 2mm</b><br>(20 kg)<br>Antistatic, Self-Smoothing 'decorative-vinyl' like epoxy floor finish  | <ul style="list-style-type: none"> <li>Alternative to vinyl for areas where a durable, hard-wearing, good chemical resistance, attractive floor with minimized visible scratches is required with conductive ESD standard.</li> </ul> | <ul style="list-style-type: none"> <li>Meets ASTM F150-06, IEC 61340-4-1, ANSI/ESD S2020, and IEC 61340-4-5 conductive requirements</li> <li>A great alternative to vinyl flooring</li> <li>Attractive; Hygienic &amp; easy to clean</li> <li>Non-tainting, non-dusting; Hard wearing</li> <li>Abrasion and Scratch resistance</li> </ul> | Approx. 3.6 kg/m <sup>2</sup>       |
| <b>Flowfresh ESD SL (2mm)</b><br>(16 kg)<br>Antistatic Polyurethane resin floor system with Polygiene® (anti-microbial additive)  | <ul style="list-style-type: none"> <li>Provides a hygienic, antistatic floor finish with exceptional chemical resistance.</li> </ul>  | <ul style="list-style-type: none"> <li>Meets ASTM F150-06, ANSI/ESD S2020, IEC 61340-4-1 and IEC 61340-4-5/ ESD S7.1. conductive requirements</li> <li>HACCP International Certified, Anti-Microbial Hygienic floor finish</li> <li>High Chemical and Abrasion Resistance;</li> <li>High Performance; Low Odour</li> </ul>                | Approx. 1.6 kg/m <sup>2</sup>       |
| <b>Flowshield Dielectric (2mm)</b><br>(20 kg)<br>2 Component, Solvent free, High build Dielectric epoxy self-smoothing system   | <ul style="list-style-type: none"> <li>Hard-wearing coloured floor finish (high voltage sub-stations- switchgear panels, VCB's, battery rooms, marshalling box flooring)</li> </ul>   | <ul style="list-style-type: none"> <li>High Dielectric Strength and insulation resistance</li> <li>Tough wear and weather resistant</li> <li>Excellent chemical resistance</li> <li>High build and strong Adhesion</li> </ul>   | Approx. 3.6 kg/m <sup>2</sup>       |
| <b>Flowfresh Dielectric (2mm)</b><br>(18 kg)<br>Dielectric, Polyurethane resin floor system with a smooth matt coloured finish with Polygiene® (anti-microbial additive)    | <ul style="list-style-type: none"> <li>Provides a hygienic, dielectric floor finish with exceptional chemical resistance where dielectric standards are required</li> </ul>   | <ul style="list-style-type: none"> <li>Ultra High Dielectric Strength and insulation resistance</li> <li>Anti-microbial, HACCP International Certified</li> <li>High Chemical and Abrasion Resistance</li> <li>High Performance and hygienic floor</li> <li>Low Odour</li> </ul>  | Approx. 3.6 kg/m <sup>2</sup>       |
| <b>Anti-Microbial Polyurethane Coating &amp; Topping Finish</b>   |   |   |                                     |
| <b>Flowfresh Sealer (5 kg)</b><br>2 Component, Water based, Polyurethane Colored Sealer Coat  | <ul style="list-style-type: none"> <li>Polyurethane sealer coat specially designed for applying on Polyurethane screed System</li> </ul>  | <ul style="list-style-type: none"> <li>Semi-flexible, pigmented Antimicrobial additive for hygiene</li> <li>Lock coat for Flowfresh</li> <li>Solvent Free; Low Odour</li> </ul>   | Approx. 0.2 kg/m <sup>2</sup> /Coat |
| <b>Flowfresh Primer (6 kg)</b><br>3 Component, Water based, Polyurethane Primer for Concrete & cementitious substrates  | <ul style="list-style-type: none"> <li>Polyurethane primer prior to use of Polyurethane screed coating or lower thickness of Polyurethane screed system</li> </ul>  | <ul style="list-style-type: none"> <li>Primer for concrete for good adhesion</li> <li>Special primer prior to application of Flowfresh Topping</li> <li>Suitable for high heat resistance area</li> <li>Good low temperature cure</li> </ul>  | Approx. 0.25 kg/m <sup>2</sup>      |
| <b>Flowfresh HF Coving Mortar (16 kg)</b><br>4-component, Solvent-free, polyurethane Screed. Contains Polygiene® (anti-microbial additive)                                  | <ul style="list-style-type: none"> <li>Suitable to use as footing/moulding compound to form coves for the Flowfresh SL, MF, RT and HF systems specially for high temperature area</li> </ul>  | <ul style="list-style-type: none"> <li>High bond strength</li> <li>Easily applied footing/moulding compound to form coves</li> <li>Very high temperature resistance</li> <li>Durable, high strength, abrasion and impact resistance</li> </ul>  | As per coving size.                 |
| <b>Flowfresh WR (16 kg)</b><br>4 component, Heavy duty, Anti-microbial treated polyurethane coving and wall rendering mortar. Contains Polygiene® (anti-microbial additive) | <ul style="list-style-type: none"> <li>Suitable for wet processing zones such as food manufacturing, chemical processing plants and food preparation areas</li> </ul>   | <ul style="list-style-type: none"> <li>Attractive textured finish (with anti-microbial additive)</li> <li>High chemical &amp; temperature resistance</li> <li>Steam cleanable and withstand high mechanical stress</li> <li>Non-tainting, non-dusting</li> <li>Coving &amp; Vertical application</li> </ul>                               | Approx. 1.6 kg/m <sup>2</sup> /mm   |

## FLOORING

| Product (Product Description)  | Applications   | Features & Benefits  | Estimation                         |
|--|--|--|------------------------------------|
| <b>Anti-Microbial Polyurethane Coating &amp; Topping Finish</b>  |  |  |                                    |
| <b>Flowfresh Coating</b> (5 kg)<br>3-component, Water-based, Polyurethane color coating. Polygiene® (anti-microbial additive)  | <ul style="list-style-type: none"> <li>Suitable to used for sealing Flowfresh HF Cove and Flowfresh SR.</li> </ul>   | <ul style="list-style-type: none"> <li>Semi-flexible, pigmented</li> <li>Lock coat for Flowfresh</li> <li>Solvent Free; Low Odour</li> <li>Colour coating for concrete and cementitious substrates</li> </ul>  | Approx.0.2 kg/m <sup>2</sup> /Coat |
| <b>Flowfresh SL (2-3mm)</b> (18 kg)<br>4 Component, Pigmented, Antimicrobial, Self-smoothing, polyurethane resin floor finish which contains Polygiene® (an anti-microbial additive)         | <ul style="list-style-type: none"> <li>Suitable for dry or semi-wet F&amp;B processing pharma, and other industrial environment where high performance flooring is required.</li> </ul>  | <ul style="list-style-type: none"> <li>Hygienic and inhibits bacteria growth</li> <li>HACCP International Certified</li> <li>High Chemical Resistance</li> <li>Abrasion Resistance</li> <li>Temperature Resistance-From 5°C to 65°C(2mm)</li> </ul>  | Approx.3.6 kg/m <sup>2</sup>       |
| <b>Flowfresh SRQ (3mm)</b> (18 kg)<br>4 Component, Decorative polyurethane resin floor screed system. Contains Polygiene® (an anti-microbial additive)                                       | <ul style="list-style-type: none"> <li>Suitable for a hygienic floor finish for wet processing areas in F&amp;B facilities and chemical processing plants.</li> </ul>  | <ul style="list-style-type: none"> <li>Hygienic and inhibits bacteria growth</li> <li>HACCP International Certified</li> <li>High Chemical and Heat Resistance (From -15°C to 90°C (at 4mm))</li> <li>Easy to clean and Slip resistance</li> <li>Attractive, coloured quartz finish</li> </ul>   | Approx.3.8 kg/m <sup>2</sup>       |
| <b>Flowfresh MF (3 to 4mm)</b> (20 kg)<br>4 Component, Anti-microbial polyurethane resin floor screed system with smooth matt coloured finish. Contains Polygiene® (anti-microbial additive) | <ul style="list-style-type: none"> <li>Dry or semi-wet Food &amp; Beverage processing, pharmaceutical and other industrial environment subject to light -medium traffic</li> </ul>   | <ul style="list-style-type: none"> <li>Hygienic and inhibits bacteria growth</li> <li>HACCP International Certified</li> <li>Non tainting &amp; Non-dusting</li> <li>High Abrasion, Chemical &amp; Temperature (From -15°C to 90°C (at 4mm)) resistant</li> <li>Attractive coloured quartz finish; UV Light stable</li> </ul>                        | Approx.7.6 kg/m <sup>2</sup>       |
| <b>Flowfresh SR(3-4mm)</b> (20 kg)<br>4 Component, Anti-microbial polyurethane resin floor system with an textured anti slip finish. Contains Polygiene® (an anti-microbial additive)        | <ul style="list-style-type: none"> <li>Suitable for wet processing areas in Food &amp; Beverage manufacturing, preparation areas and processing plants.</li> </ul>   | <ul style="list-style-type: none"> <li>Hygienic and inhibits bacteria growth</li> <li>HACCP International Certified</li> <li>Non-tainting; UV light stable</li> <li>High Abrasion, Chemical &amp; Temperature (-15°C to 90°C) resistant</li> <li>Textured anti-slip surface</li> </ul>   | Approx.5.7 kg/m <sup>2</sup>       |
| <b>Flowfresh RT(6-9mm)</b> (33 kg)<br>5 component, Anti-microbial, Hygienic Polyurethane screed, textured coloured finish that incorporates Polygiene®(an anti-microbial additive)           | <ul style="list-style-type: none"> <li>Suitable for wet processing areas in Food &amp; Beverage facilities and other Industrial environment subject to high volumes of traffic</li> </ul>                                      | <ul style="list-style-type: none"> <li>Hygienic and inhibits bacteria growth</li> <li>HACCP International Certified</li> <li>Non tainting &amp; Non dusting; Steam cleanable</li> <li>High Abrasion, Chemical &amp; Temperature (From -45°C to 120°C (at 9mm)) Resistant</li> <li>Slip resistance &amp; extremely hard wearing (wet area)</li> </ul> | Approx.2 kg/m <sup>2</sup> /mm     |
| <b>Flowfresh HF (6-9mm)</b> (33 kg)<br>5 component, Anti-microbial, Hygienic Polyurethane resin screed, textured finish that incorporates Polygiene®(an anti-microbial additive)             | <ul style="list-style-type: none"> <li>Suitable for wet processing areas in Food &amp; Beverage facilities and other Industrial environment subject to high volumes of traffic</li> </ul>                                      | <ul style="list-style-type: none"> <li>Hygienic and inhibits bacteria growth</li> <li>HACCP International Certified</li> <li>Fast return to service; Steam cleanable</li> <li>High Abrasion, Chemical &amp; Temperature (From -45°C to 120°C (at 9mm)) Resistant</li> <li>Slip resistance and extremely hard wearing (wet area)</li> </ul>           | Approx.2 kg/m <sup>2</sup> /mm     |
| <b>Flowfresh IF (6-9mm)</b> (20 kg)<br>5 component, Anti-microbial, Cementitious urethane mortar. incorporates Polygiene®(an anti-microbial additive)  | <ul style="list-style-type: none"> <li>Suitable for a hygienic floor finish for heavy duty wet processing areas in F&amp;B facilities and other Industrial environment where high performance flooring is required.</li> </ul> | <ul style="list-style-type: none"> <li>Hygienic and inhibits bacteria growth</li> <li>Unaffected by moisture vapour</li> <li>Steam cleanable</li> <li>Very high Chemical, Abrasion &amp; Temperature Resistant (From -45°C to 120°C (at 9mm))</li> <li>Extremely hard wearing and low maintenance</li> </ul>   | Approx.2 kg/m <sup>2</sup> /mm     |

## FLOORING



### COMMERCIAL FLOORING

| Natural Stone/Comfort flooring   |   |  |                              |
|--|---|--|------------------------------|
| <b>Peran SL (1mm)</b> (16 kg)<br>4 Component, Gloss, Self-Smoothing resin floor finish   | <ul style="list-style-type: none"> <li>Commercial settings such as retail, restaurants, offices and other areas. Ideal for a minimalist, modern, contemporary environment</li> </ul>                          | <ul style="list-style-type: none"> <li>Attractive and colourful floor finish</li> <li>Easy to clean and maintain</li> <li>Hard wearing</li> <li>High chemical resistance</li> </ul>  | Approx.1.6 kg/m <sup>2</sup> |
| <b>Peran Comfort (2mm)</b> (20 kg)<br>4 component, Self-Smoothing polyurethane resin flooring system with matt & satin finish                              | <ul style="list-style-type: none"> <li>Commercial settings such as retail, school, restaurants, offices and other areas. Ideal for a minimalist, modern, contemporary environment</li> </ul>                  | <ul style="list-style-type: none"> <li>Attractive</li> <li>Resilient and Sound Dampening</li> <li>Solvent free; Low Odour</li> <li>Hard Wearing; UV resistant</li> <li>High Chemical Resistance</li> </ul>                                     | Approx.2.8 kg/m <sup>2</sup> |
| <b>Peran STB (3-4mm)</b> (20 kg)<br>4 component, Decorative epoxy resin floor topping (colour stable quartz granules encapsulated in a clear resin binder) | <ul style="list-style-type: none"> <li>Ideal for use in commercial settings such as leisure facilities, schools, offices and other areas.</li> </ul>  | <ul style="list-style-type: none"> <li>Attractive; Hygienic</li> <li>High Scratch resistance</li> <li>Easy to Clean; Hard Wearing</li> <li>High Chemical Resistance</li> </ul>   | Multilayer System            |
| <b>Metallic Expression</b><br>Hard wearing, Decorative metallic epoxy floor finish   | <ul style="list-style-type: none"> <li>Commercial applications, retails, restaurants, reception halls and exhibition areas, casinos, trendy bars and cafes, night clubs, museum and art galleries.</li> </ul> | <ul style="list-style-type: none"> <li>Highly decorative &amp; hygienic metallic floor finish</li> <li>Versatile design potential</li> <li>Exceptional wear resistance</li> <li>Easy to clean and maintain</li> <li>UV light stable</li> </ul> | Multilayer System            |
| <b>Rustik (6mm)</b> (25 kg)<br>Stone carpet system (colourful stone aggregates banded with a clear Epoxy resin)  | <ul style="list-style-type: none"> <li>Car showrooms, retail stores, reception halls and commercial spaces (Use limited only by your imagination)</li> </ul>  | <ul style="list-style-type: none"> <li>Attractive</li> <li>Hard Wearing</li> <li>Versatile</li> <li>Natural looking interior Floor Finish</li> </ul>   | Multilayer System            |
| <b>Rustik UV (6mm)</b> (25 kg)<br>Stone carpet system (colourful stone banded in a clear aliphatic polyurethane resin)                                     | <ul style="list-style-type: none"> <li>Outdoor areas in leisure and retail complexes, theme parks, holiday resorts and other public point of interest</li> </ul>  | <ul style="list-style-type: none"> <li>Attractive</li> <li>Hard Wearing</li> <li>Versatile</li> <li>UV Stable</li> <li>Natural looking interior Floor Finish</li> </ul>  | Multilayer System            |

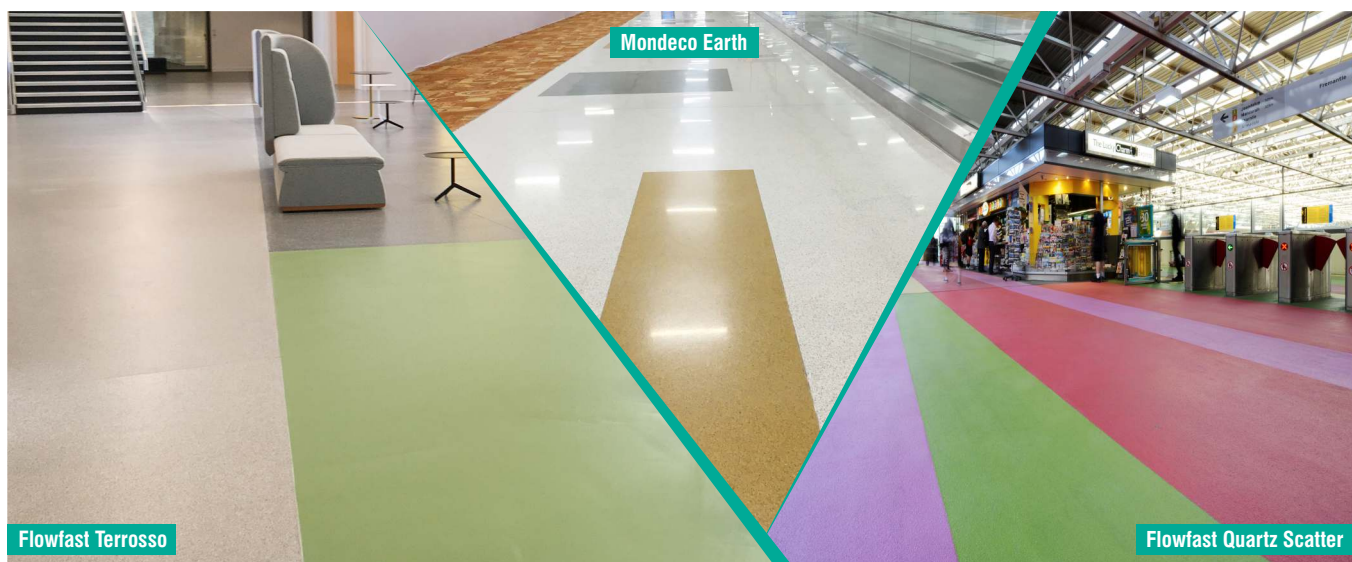
### Decorative Resin Terrazzo finish

|   |   |   |                                  |
|---|---|---|----------------------------------|
| <b>Mondeco Earth (8mm)</b> (45 kg)<br>5 component, Solvent free epoxy resin terrazzo floor finish (incorporates granite and flint aggregates) | <ul style="list-style-type: none"> <li>Airport and railway terminals, shopping centres, hotels and restaurants. Also for heavy-duty food and pharmaceutical production and process areas, corridors and kitchens</li> </ul> | <ul style="list-style-type: none"> <li>Attractive, enhances the working environment</li> <li>Design Flexibility and Seamless Finish</li> <li>Hard Wearing and very high abrasion Resistance</li> <li>Solvent Free and long life span</li> <li>Hygienic, Easy to Clean and maintain</li> </ul> | Approx.2.7 kg/m <sup>2</sup> /mm |
|---|---|---|----------------------------------|



## FLOORING

| Product (Product Description)   | Applications   | Features & Benefits   | Estimation                       |
|---|--|---|----------------------------------|
| <b>Decorative Resin Terrazzo finish</b>   |  |   |                                  |
| <b>Mondeco Crystal (8mm)</b><br>(45 kg)<br>Highly decorative, Solvent free epoxy resin terrazzo floor finish (Incorporates recycled, clear crystal glass aggregates)                  | <ul style="list-style-type: none"> <li>Public areas such as airport and railway terminals, shopping centres, hotels and restaurants</li> </ul>   | <ul style="list-style-type: none"> <li>Attractive, enhances the working environment</li> <li>Design Flexibility and Seamless Finish</li> <li>Hard Wearing and long life span</li> <li>Environmentally Friendly</li> <li>Hygienic, Easy to Clean and maintain</li> </ul>                 | Approx.2.7 kg/m <sup>2</sup> /mm |
| <b>Mondeco Splash (8mm)</b><br>(45 kg)<br>5 component, Seamless highly decorative epoxy resin terrazzo floor finish (incorporating recycled clear and coloured glass aggregates)      | <ul style="list-style-type: none"> <li>Airport and railway terminals, shopping centres, hotels, restaurants, and environments where design, aesthetics and durability are of paramount concern</li> </ul>                        | <ul style="list-style-type: none"> <li>Solvent free, low odour</li> <li>Highly Decorative; Flexible design; Seamless finish</li> <li>Easy to clean and maintain; Long life span</li> <li>High chemical and abrasion resistance</li> </ul>   | Approx.2.7 kg/m <sup>2</sup> /mm |
| <b>Mondeco Mirrazzo (8mm)</b><br>(45 kg)<br>5 component, Seamless epoxy resin terrazzo floor finish (blend of recycled crushed clear, coloured and mirror glass & metallic particles) | <ul style="list-style-type: none"> <li>Airport and railway terminals, shopping centres, hotels, restaurants, and environments where design, aesthetics and durability are of paramount concern</li> </ul>                        | <ul style="list-style-type: none"> <li>Aesthetically pleasing flexible designs</li> <li>Solvent free, low odour</li> <li>Easy to clean and maintain; Long life span</li> <li>Temperature resistant</li> <li>Contains more than 50% recycled material</li> </ul>                         | Approx.2.7 kg/m <sup>2</sup> /mm |
| <b>Mondeco Exotic (8mm)</b><br>(45 kg)<br>5 component, Highly decorative epoxy resin terrazzo floor finish (incorporating recycled glass and reflective glass)                        | <ul style="list-style-type: none"> <li>Suitable for airport and railway terminals, shopping centres, hotels, restaurants, and environments where design, aesthetics and durability are of paramount concern.</li> </ul>          | <ul style="list-style-type: none"> <li>Aesthetically pleasing - enhances the working environment</li> <li>Solvent free, low odour</li> <li>Flexible design with seamless finish</li> <li>Easy to clean; Long life span</li> <li>High abrasion and chemical resistance</li> </ul>        | Approx.2.7 kg/m <sup>2</sup> /mm |
| <b>Mondeco TZ (8mm)</b><br>(45 kg)<br>5 component, Decorative granite filled, Anti-microbial, polyurethane terrazzo finish.   | <ul style="list-style-type: none"> <li>Ideal for pharmaceutical, food and chemical process areas where the floor is subjected to hot fluid spillages, steam cleaning, heavy traffic, impact and chemical attack.</li> </ul>      | <ul style="list-style-type: none"> <li>Attractive; Seamless and hygienic finish</li> <li>Excellent thermal shock resistance, steam cleanable</li> <li>Polygiene (an antimicrobial additive)</li> <li>Easy to clean, Low odour</li> <li>High abrasion and Chemical resistance</li> </ul> | Approx.2.7 kg/m <sup>2</sup> /mm |
| <b>Mondeco Rapide (8mm)</b><br>(45 kg)<br>5 component, Rapid curing resin terrazzo floor finish   | <ul style="list-style-type: none"> <li>Public areas where high end aesthetics and durability and fast turnaround are of key concern. such as airport and railway terminals, shopping centres, hotels and restaurants.</li> </ul> | <ul style="list-style-type: none"> <li>Attractive; Design flexibility ;Fast Installation</li> <li>High abrasion Resistance</li> <li>Solvent Free &amp; UV light resistance</li> <li>Seamless and non-porous finish</li> <li>Easy to Clean; Long life span</li> </ul>                    | Approx.2.7 kg/m <sup>2</sup> /mm |



## FLOORING

| Product (Product Description)   | Applications  | Features & Benefits   | Estimation                   |
|---|---|---|------------------------------|
| <b>Fast Curing Methylmetha Acrylate (MMA)</b>   |   |   |                              |
| <b>Flowfast Damp Primer</b><br>(20 kg)<br>Methylmetha Acrylate(MMA)<br>Primer for Damp Substrate  | <ul style="list-style-type: none"> <li>MMA primer prior to application of MMA system on damp substrate.</li> </ul>  | <ul style="list-style-type: none"> <li>Good adhesion to damp concrete</li> <li>Fast film cure and overcoat time</li> <li>Priming prior to application of Deckshield Rapide or Flowfast resin topping</li> </ul>   | Approx.0.3 kg/m <sup>2</sup> |
| <b>Flowfast Ceramic/Metal Primer</b> (20 kg)<br>Methylmetha Acrylate(MMA)<br>Primer for Metal and Ceramic substrate   | <ul style="list-style-type: none"> <li>MMA resin primer prior to application of MMA system on Ceramic or metal substrate.</li> </ul>  | <ul style="list-style-type: none"> <li>Good adhesion to Ceramic or metal substrate</li> <li>Fast film cure and overcoat time</li> <li>Priming prior to application of Flowfast resin topping</li> </ul>   | Approx.0.3 kg/m <sup>2</sup> |
| <b>Flowfast Asphalt Primer</b><br>(20 kg)<br>Methylmetha Acrylate(MMA)<br>Primer for Asphalt Substrate  | <ul style="list-style-type: none"> <li>MMA resin primer prior to application of MMA resin system on Asphalt substrate.</li> </ul>   | <ul style="list-style-type: none"> <li>Good adhesion to Asphalt Substrate</li> <li>Fast film cure and overcoat time</li> <li>Priming prior to application of Deckshield Rapide or Flowfast resin topping</li> </ul>                                       | Approx.0.3 kg/m <sup>2</sup> |
| <b>Flowfast Standard Primer</b><br>(20 kg)<br>Methylmetha Acrylate(MMA)<br>primer for Concrete Substrate  | <ul style="list-style-type: none"> <li>MMA resin primer prior to application of MMA resin system on concrete substrate.</li> </ul>  | <ul style="list-style-type: none"> <li>Good adhesion to Concrete Substrate</li> <li>Fast film cure and overcoat time</li> <li>Priming prior to application of Deckshield Rapide or Flowfast resin topping</li> </ul>                                      | Approx.0.3 kg/m <sup>2</sup> |
| <b>Flowfast Coating</b><br>(5 kg)<br>Methylmetha Acrylate(MMA) resin floor coating, developed for light to medium traffic environments.                                 | <ul style="list-style-type: none"> <li>Ideal for corridors, walkways, store rooms, laundry rooms, workshops, packaging areas where time for floor repairing/resurfacing is limited</li> </ul> | <ul style="list-style-type: none"> <li>Fast curing and rapid installation</li> <li>Good abrasion,UV and chemical resistance</li> <li>Non dusting</li> <li>Anti-Slip finish</li> </ul>   | Multilayer System            |
| <b>Flowfast SL (2-3MM)</b><br>(20 kg)<br>Self smoothing Methylmetha Acrylate(MMA) resin floor topping (Satin/matt coloured)   | <ul style="list-style-type: none"> <li>Ideal for use in dry process areas where the floor is subject to impact and medium/heavy duty traffic</li> </ul>                                       | <ul style="list-style-type: none"> <li>Excellent impact &amp; UV resistance</li> <li>Seamless and hygienic finish</li> <li>Rapid installation and fast cure</li> <li>High chemical and abrasion resistance</li> <li>Easy to clean and maintain</li> </ul> | 3.6 kg/m <sup>2</sup>        |
| <b>Flowfast Quartz (4mm)</b><br>(20 kg)<br>Decorative Methylmetha Acrylate(MMA) resin floor finish (colour stable quartz granules encapsulated in a clear resin binder) | <ul style="list-style-type: none"> <li>A hard wearing solution ideal for use in commercial and industrial settings</li> </ul>   | <ul style="list-style-type: none"> <li>Fast curing and rapid installation</li> <li>Attractive</li> <li>Chemical and scratch resistance</li> <li>Hard wearing</li> </ul>   | Multilayer System            |
| <b>Flowfast Quartz Scatter (3mm)</b> (20 kg)<br>Methylmetha Acrylate(MMA) resin floor finish (coloured quartz granules encapsulated in a clear resin binder)            | <ul style="list-style-type: none"> <li>Ideal for use in areas subject to heavy traffic, impact and chemical spills (where time for floor repairing is very limited)</li> </ul>                | <ul style="list-style-type: none"> <li>Fast curing and rapid installation</li> <li>Attractive and slip resistant</li> <li>Scratch,abrasion and Chemical resistance</li> <li>Can be overlaid onto existing floors</li> </ul>                               | Multilayer System            |
| <b>Flowfast Terrasso (4mm)</b><br>(20 kg)<br>Decorative hard wearing Methylmetha Acrylate(MMA) resin floor finish   | <ul style="list-style-type: none"> <li>Ideal for use in high traffic retail and industrial environments (where time for floor repairing is very limited)</li> </ul>                           | <ul style="list-style-type: none"> <li>Fast curing and rapid installation</li> <li>Attractive; Flexible design options</li> <li>Chemical,Scratch and wear resistance</li> <li>Easy to clean; Hygienic</li> </ul>  | Multilayer System            |
| <b>Flowfast Kristalina (4mm)</b><br>(20 kg)<br>Decorative, Smooth sparkling Methylmetha Acrylate(MMA) resin floor finish  | <ul style="list-style-type: none"> <li>Ideal for use in all commercial settings (where time for floor repairing is very limited)</li> </ul>   | <ul style="list-style-type: none"> <li>Fast curing and rapid installation</li> <li>Attractive Sparkling finish</li> <li>Chemical, Scratch and abrasion resistance</li> <li>Easy to clean; Hygiene</li> </ul>  | Multilayer System            |
| <b>Sport Floor</b>  |   |   |                              |
| <b>FlowSport</b><br>Synthetic, Polyurethane, indoor sports floor system   | <ul style="list-style-type: none"> <li>Ideal for use in indore sports complexes</li> </ul>  | <ul style="list-style-type: none"> <li>Flexible,durable and attractive</li> <li>Resilient and uniform surface</li> <li>Court lines/ markings internationally recognised colours</li> <li>Eliminates Glare</li> </ul>                                      | Multilayer System            |

## FLOORING



| Product (Product Description)   | Applications  | Features & Benefits   | Estimation                     |
|---|---|---|--------------------------------|
| <b>Car Deck Protective Coating</b>  |   |   |                                |
| <b>Deckshield Primer</b><br>3 Component epoxy resin based primer  | <ul style="list-style-type: none"> <li>Priming of concrete or screed substrate before application of Deckshield System.</li> </ul>  | <ul style="list-style-type: none"> <li>Good adhesion to concrete</li> <li>Fast film cure and overcoat time</li> <li>Good corrosion resistance</li> <li>Good low temperature cure</li> </ul>   | 0.5 kg/m <sup>2</sup>          |
| <b>Deckshield ID</b><br>Singapore Green Label certified 032-089, flexible polyurethane traffic coating system for intermediate car parking levels | <ul style="list-style-type: none"> <li>Cosmetically &amp; functionally enhances intermediate decks of multi-storey, basement and other trafficable suspended floors</li> </ul>  | <ul style="list-style-type: none"> <li>Attractive; Environmentally Friendly; Low VOC</li> <li>Attractive (Brightens up dull car park)</li> <li>Hard-Wearing; Reduce noise (tyre squeal)</li> <li>Slip, fire, crack &amp; UV Resistant (Optional)</li> <li>Chemical resistance (engine oil, battery acid, fuel)</li> </ul> | Multilayer System              |
| <b>Deckshield ED</b><br>Flexible polyurethane deck coating (colourful crack bridging & waterproof surface) for exposed car park decks             | <ul style="list-style-type: none"> <li>Cosmetically &amp; functionally enhances top deck of an car park making them brighter and safer places to visit.</li> </ul>  | <ul style="list-style-type: none"> <li>Attractive; Environmentally Friendly; Low VOC</li> <li>Hard-Wearing; Reduce noise (tyre squeal)</li> <li>Slip, fire, crack &amp; UV Resistant (Optional)</li> <li>Chemical resistance (engine oil, battery acid, fuel)</li> </ul>  | Multilayer System              |
| <b>Deckshield ID Rapide</b><br>Methylmethacrylate (MMA) car park traffic coating system for internal multistorey parking structures.              | <ul style="list-style-type: none"> <li>Developed to enable very fast track applications, dramatically reducing program time</li> </ul>  | <ul style="list-style-type: none"> <li>Fast cure</li> <li>Attractive and Hard Wearing</li> <li>Fire and slip Resistant</li> <li>UV Resistant</li> </ul>   | Multilayer System              |
| <b>Deckshield ED Rapide</b><br>Methylmethacrylate (MMA) traffic coating system for exposed car park decks   | <ul style="list-style-type: none"> <li>Developed to enable very fast application times for external deck for multi-storey car park.</li> </ul>  | <ul style="list-style-type: none"> <li>Fast Cure</li> <li>Attractive, Hard Wearing and Waterproof</li> <li>Fire &amp; Slip Resistant</li> <li>UV Resistant</li> </ul>   | Multilayer System              |
| <b>Deckcoat OP (20 kg)</b><br>2 Component Epoxy Orange Peel finish car deck coating   | <ul style="list-style-type: none"> <li>Designed to create a uniform "Orange Peel" surface texture. The lightly textured surface provides enhanced slip resistance while remaining easy to clean for car parking areas.</li> </ul> | <ul style="list-style-type: none"> <li>Chemical Resistant</li> <li>Slip Resistant</li> <li>Hygienic and Easy to Clean</li> <li>Hard-Wearing</li> </ul>  | Approx. 0.8 kg/m <sup>2</sup>  |
| <b>Deckcoat EP (20 kg)</b><br>Singapore Green Label certified - 032-089 Epoxy traffic coating system for interior car parking levels              | <ul style="list-style-type: none"> <li>Cosmetically enhances multi-storey car parks, making them brighter and safer places to visit</li> </ul>  | <ul style="list-style-type: none"> <li>Environmentally Friendly &amp; Singapore Green Label Certified</li> <li>Attractive low VOC and solvent free</li> <li>Hard wearing</li> <li>Slip and Fire Resistant</li> </ul>  | Approx. 0.8 kg/m <sup>2</sup>  |
| <b>Deckshield UV (5 kg)</b><br>2-component, Coloured, UV light stable, polyurethane coating   | <ul style="list-style-type: none"> <li>Used as part of the Deckshield system to provide a UV light stable finish</li> </ul>   | <ul style="list-style-type: none"> <li>High Chemical Resistant</li> <li>UV Stable and Low Maintenance</li> <li>Hard wearing and Abrasion Resistant</li> <li>Aesthetically Attractive</li> <li>Seamless and Hygienic Finish</li> </ul>   | Approx. 0.25 kg/m <sup>2</sup> |
| <b>Deckshield UV Line Marker (5 kg)</b><br>UV stable, Polyurethane based car park line-marker   | <ul style="list-style-type: none"> <li>For use in car parks and segregation areas. Designed for use in conjunction with the Deckshield systems</li> </ul>   | <ul style="list-style-type: none"> <li>High Chemical Resistant</li> <li>UV Stable and Low Maintenance</li> <li>Hard wearing and Abrasion Resistant</li> <li>Aesthetically Attractive</li> <li>Seamless and Hygienic Finish</li> </ul>   | Approx. 0.25 kg/m <sup>2</sup> |

## FLOORING

| Product (Product Description)   | Applications   | Features & Benefits   | Estimation                         |
|---|--|---|------------------------------------|
| <b>Wall Coatings</b>  |  |   |                                    |
| <b>Flowseal EPW Wall White</b> (10 kg)<br>Single Component, pigmented, water-based epoxy, hygienic wall sealer that is compliant to CSM® (Cleanroom Suitable Materials) requirements. | <ul style="list-style-type: none"> <li>Suitable for walls in F&amp;B processing plants, pharmaceutical cleanrooms, and hospitals</li> </ul>  | <ul style="list-style-type: none"> <li>Hygienic, Easy to clean and maintain</li> <li>Vapour permeable; allows substrate to breathe</li> <li>Can be applied to damp substrates</li> <li>Enhances appearance of working environment</li> <li>Solvent free, low odour</li> </ul> | Approx.0.2 kg/m <sup>2</sup> /coat |
| <b>Flowguard WB</b> (20 kg)<br>Single component, Water based polyurethane interior wall coating   | <ul style="list-style-type: none"> <li>Suitable for walls in F&amp;B processing pharmaceutical cleanrooms, and hospitals</li> </ul>  | <ul style="list-style-type: none"> <li>Smooth, Flexible &amp; Hygienic surface</li> <li>Inhibits growth of microbial - incorporates broad spectrum fungicide</li> <li>Chemical Resistant; Low Odour</li> </ul>  | Approx.0.2 kg/m <sup>2</sup> /Coat |
| <b>Stericote</b> (20 kg)<br>Non toxic, Anti-fungal, single component PU resilient coating   | <ul style="list-style-type: none"> <li>Coating of walls, ceilings, insulation and steelwork in areas where damp humid conditions promote fungal and bacterial proliferation</li> </ul> | <ul style="list-style-type: none"> <li>Hygienic, non-toxic</li> <li>Inhibits growth of microbial</li> <li>Chemical Resistant</li> <li>Low Odour</li> <li>Versatile Application and flexible</li> </ul>  | Approx.0.2 kg/m <sup>2</sup> /Coat |
| <b>Flowcoat CRV</b> (10 kg)<br>2 component, high chemical resistance epoxy resin based vertical grade coating   | <ul style="list-style-type: none"> <li>Aquarium tanks, pools, chemical tanks where high degree of chemical resistance &amp; waterproofing properties are required.</li> </ul>          | <ul style="list-style-type: none"> <li>High Chemical &amp; Abrasion resistant</li> <li>Crack Resistant</li> <li>Solvent Free; Low VOC</li> <li>Easy to Apply</li> </ul>   | Approx.0.2 kg/m <sup>2</sup> /Coat |
| <b>Tammscoat</b> (25 kg)<br>High build, water-based, acrylic protective anti-carbonation coating  | <ul style="list-style-type: none"> <li>Protect and decorate sound masonry and concrete walls, coloums ,ceiling for multi-story car park area</li> </ul>                                | <ul style="list-style-type: none"> <li>Repels water and Breathable</li> <li>Excellent Adhesion; Durable</li> <li>Protect from Carbonation</li> <li>Outstanding colour retention</li> </ul>  | Approx.0.5 kg/m <sup>2</sup>       |

| <b>Cementitious Sub-Floors &amp; Polishable overlays</b>  |  |  |                                    |
|---|--|--|------------------------------------|
| <b>Isocrete Polymer 70</b> (20 kg)<br>An aqueous dispersion of a vinyl acetate/ethylene/vinyl chloride terpolymer.  | <ul style="list-style-type: none"> <li>Diluted for priming, mixed with cement for bonding sand &amp; cement screeds, K-Screed etc. or as additive in screed mixes such as Isogran</li> </ul>   | <ul style="list-style-type: none"> <li>Bonding agent and Screed Additive</li> <li>Priming before application of K-Screed or Cementitious Screed.</li> <li>Solvent free ; Odourless</li> </ul>  | 0.35 kg/m <sup>2</sup>             |
| <b>M-Bond &amp; M-Bond Extra</b> (20 kg)<br>M-Bond - single coat bonding agent.M-Bond Extra - two coat application for damp proof membrane & bonding agent. | <ul style="list-style-type: none"> <li>Bonding and damp proofing concrete, cementitious screeds and polymer modified cementitious screeds to concrete(Isocrete K-Screed, Isocrete Fast-K Screed and Isocrete Screedfast)</li> </ul>      | <ul style="list-style-type: none"> <li>Excellent bond</li> <li>Thinner Screed Possible</li> <li>Combats moisture</li> <li>Solvent Free</li> <li>Long open time</li> </ul>  | Approx.0.2 kg/m <sup>2</sup> /Coat |
| <b>Isocrete Self Level Plus (2-4mm)</b> (25 kg)<br>Fast drying hand & pump applied cement-based underlayment  | <ul style="list-style-type: none"> <li>Suitable for floors in offices, shops, public buildings, schools, hospitals, airports, prisons, hotels and resorts, casinos</li> </ul>  | <ul style="list-style-type: none"> <li>Self-smoothing and rapid drying</li> <li>Fast setting and fast track installation</li> <li>Single Pack; Durable</li> <li>Impact &amp; abrasion resistance</li> </ul>  | Approx.4.6 kg/m <sup>2</sup>       |
| <b>Isocrete K-Screed</b> (1 kg)<br>Semi-dry cementitious screed which incorporates proprietary additives  | <ul style="list-style-type: none"> <li>High traffic areas where thin finishes such as carpet, vinyl, resin to be used. (Laid bonded, un-bonded or floating for commercial area).Fast track projects (Quick overlay of screed)</li> </ul> | <ul style="list-style-type: none"> <li>Reduces construction time</li> <li>Excellent workability; high strength</li> <li>Compliant with building regulations &amp; British Board of Agreement (BBA)</li> <li>HD Specs available</li> </ul>  | As per thickness                   |
| <b>Level Top SP</b> (25 kg)<br>Acrylic polymer modified, Stainable/Polishable Self-Leveling Overlayment   | <ul style="list-style-type: none"> <li>Levelling of interior concrete substrates and decorate/polished wearing surfaces for retail and commercial area</li> </ul>  | <ul style="list-style-type: none"> <li>Self-levelling, Adhesion, toughness &amp; long term durability</li> <li>Integrally coloured for a decorative finish</li> <li>May be polished in 24 hours</li> <li>Acceptable as an underlayment</li> <li>Compatible with liquid densifiers</li> </ul> | 2.1 kg/m <sup>2</sup> /mm          |

## REPAIR & REHABILITATION

| Product (Product Description)   | Applications  | Features & Benefits   | Estimation   |
|---|---|---|--|
| <b>Bonding Agents &amp; Adhesives</b>   |   |   |  |
| <b>Epoxy based</b>  |   |   |  |
| <b>Dural 452 Gel-IN</b> (5 kg)<br>High modulus epoxy adhesive<br>ASTM C881-10 Types I, II, IV, and V, Grade 3, Class C                    | <ul style="list-style-type: none"> <li>Bonding of concrete, masonry, steel or wood, anchoring bolts, dowels or pins</li> <li>Pick-proof sealant for jails / prisons and kennels</li> <li>Mix with DSS to create a repair mortar</li> </ul>              | <ul style="list-style-type: none"> <li>Exceptional adhesion to construction materials</li> <li>Perfect for vertical and overhead bonding</li> <li>Moisture insensitive</li> <li>Superior strength</li> </ul>                                  | 3.0 to 3.5 kg/m <sup>2</sup> at 2 mm thickness   |
| <b>Dural 452 LV-IN</b> (5 kg)<br>Low Viscosity, High modulus epoxy adhesive ASTM C881 Types 1 & IV, Grade 1                               | <ul style="list-style-type: none"> <li>Bonding of concrete, masonry or wood</li> <li>Injection resin for cracked</li> <li>Gravity feed cracks in concrete slabs</li> <li>Anchoring bolts, dowels, or pins</li> </ul>                                    | <ul style="list-style-type: none"> <li>Exceptional adhesion to construction materials</li> <li>Low viscosity penetrates deep into cracks</li> <li>Moisture insensitive</li> <li>Impeccable bond strength</li> </ul>                           | 5 kg yields 0.004 m <sup>3</sup> /5kg of epoxy   |
| <b>Dural LPL MV-IN</b> (5 kg)<br>Bonding agent extended working time, High modulus epoxy ASTM C881-10 Types II, Grade 2, Class C, E and F | <ul style="list-style-type: none"> <li>Bonding fresh, plastic to hardened concrete</li> <li>General adhesive for concrete and masonry</li> <li>Mix dried silica sand to create repair mortar Repairs &amp; Extensions in building/structures</li> </ul> | <ul style="list-style-type: none"> <li>Provides exceptional adhesion</li> <li>Easy to use; Medium Viscosity</li> <li>Moisture insensitive for damp applications</li> <li>Longer working time, even in warm conditions</li> </ul>              | 2.0 to 2.5 m <sup>2</sup> /kg  |
| <b>Duralprep A.C.</b> (5 kg)<br>Epoxy bonding agent and Anti-Corrosion coating for reinforcement  | <ul style="list-style-type: none"> <li>Bonding agent for fresh to existing concrete</li> <li>Repairs with concrete or epoxy mortars</li> <li>Anti-corrosion coating for steel rebar</li> <li>On grade or above grade applications</li> </ul>            | <ul style="list-style-type: none"> <li>Long open time</li> <li>Contains a corrosion inhibitor</li> <li>Ease of application (brush/spray)</li> <li>Do not form a vapor barrier, Non-Flammable</li> </ul>                                       | 6.0 -7.0 m <sup>2</sup> /coat  |
| <b>Latex Based</b>  |   |   |  |
| <b>Akkro 7T</b> (20 & 210 kg)<br>Liquid Bonding Admixture ASTM C 1059, Type II  | <ul style="list-style-type: none"> <li>Cement based coatings, toppings, patching mortars, leveling compounds, stucco and terrazzo</li> <li>Mixing liquid for TAMOSEAL, CONCRETE FINISHER, TAMMS SBC and TAMMS STUCCO FINISH</li> </ul>                  | <ul style="list-style-type: none"> <li>Increases flexural, tensile and bond strength</li> <li>Protects against freeze thaw damage</li> <li>Reduces shrinkage</li> <li>Resists water penetration</li> </ul>                                    | Applications over 9.5 mm; use a 1:3 mixture  |
| <b>Flex-con</b> (20 & 210 kg)<br>Acrylic Latex Bonding Admixture ASTM C 1059, Type II   | <ul style="list-style-type: none"> <li>Bond coats for overlays, repair mortars, thin sets, stucco, General reconstruction work</li> <li>Repairs utilizing spray or fill coats</li> <li>Repairs to precast structural members</li> </ul>                 | <ul style="list-style-type: none"> <li>Increased mortar flexural strength</li> <li>Wear resistance under rubber wheeled traffic</li> <li>Increases mortar tensile strength</li> <li>Repair mortar offers greater impact resistance</li> </ul> | Cement Bond Coat - 56 to 74 m <sup>2</sup> /kg<br>Repair Mortar - 10 to 11 m <sup>2</sup> /kg @13 mm |
| <b>SBR Latex</b> (20 & 210 kg)<br>Bonding Admixture ASTM C 1059-86, Type II   | <ul style="list-style-type: none"> <li>Bond coats for overlays, repair mortars, thin sets, stucco, General reconstruction work</li> <li>Repairs utilizing spray or fill coats</li> <li>Repairs to precast structural members</li> </ul>                 | <ul style="list-style-type: none"> <li>Increased mortar flexural strength</li> <li>Excellent bond strength to hardened concrete</li> <li>Increases mortar tensile strength</li> <li>Increases durability during Freeze/thaw cycles</li> </ul> | Refer to TDS mix design. SBR Latex (as a slurry primer) approximately 4-5 m <sup>2</sup> /kg         |
| <b>Latex Based</b>  |   |   |  |
| <b>Isocrete Polymer 70</b> (20 kg)<br>A terpolymer modified PVA bonding agent and screed additive   | <ul style="list-style-type: none"> <li>Can be used diluted for priming</li> <li>Mixed with cement for bonding sand and cement screeds, K-Screed, Fast K Screed etc</li> <li>An additive in screed mixes such as Isogran</li> </ul>                      | <ul style="list-style-type: none"> <li>Provides a higher degree of bond (concrete screeds)</li> <li>Resistance to attack by moisture after hardening</li> <li>Increased mechanical strength</li> <li>Reduced cracking</li> </ul>              | Coverage 4.91- 6.14 m <sup>2</sup> /kg   |
| <b>Tammsweld</b> (20 & 210 kg)<br>Rewettable Latex Bonding Agent for Concrete ASTM C 1059, Type I   | <ul style="list-style-type: none"> <li>Concrete, Brick, Tile, Stone, Concrete block</li> <li>Plaster, Gypsum board, Lath, Plywood</li> <li>Hardboard, Wood</li> <li>Interior and exterior surfaces</li> </ul>   | <ul style="list-style-type: none"> <li>High build bonding agent or polymer admixture</li> <li>Increases bond strength</li> <li>Improves durability</li> <li>Long open time</li> </ul>   | 4.91 to 6.14 m <sup>2</sup> /kg  |

## REPAIR & REHABILITATION

| Product (Product Description)  | Applications  | Features & Benefits   | Estimation  |
|--|---|---|---|
| <b>Grouts</b>  |   |   |   |
| <b>Cementitious grout</b>  |   |   |   |
| <b>Grout Admix-IN</b><br>(250 gms & 5 kg)<br>Expanding Grout additive for injection cement slurry. ASTM C827                       | <ul style="list-style-type: none"> <li>Filling gaps between precast elements</li> <li>Repairing honeycombs by pressure grouting</li> <li>Site batched repair/reprofiling mortars</li> <li>Filling up cavity &amp; void</li> </ul>               | <ul style="list-style-type: none"> <li>Based on gaseous expansion system</li> <li>Compensates shrinkage in plastic stage</li> <li>Reduces water demand and pumpability</li> <li>Most economical to use and robust</li> </ul>  | 250 gm / 50 kg cement (250 gm sachet / cement bag) / 25 L Water |
| <b>Euco THX</b> (5 kg & 20 kg)<br>Powdered Admixture for high strength, Non-shrink grout. Exceed or Meet requirements of ASTM C937 | <ul style="list-style-type: none"> <li>Rock and Soil Anchors</li> <li>Micropiles, Soil nails &amp; Rockbolts</li> <li>Grouting applications where high strength, non-shrink grouts are required</li> </ul>                                      | <ul style="list-style-type: none"> <li>Reduces or eliminates grout shrinkage</li> <li>Enhances flowability of cement grouts</li> <li>Enables the development of higher strength</li> <li>Produces a thixotropic grout mix</li> </ul>  | 1 to 3 kg/50 kg of cementitious material                        |
| <b>Euco Grout UHS-IN</b> (25 kg)<br>Non-shrink, Free flow ultra high strength grout  | <ul style="list-style-type: none"> <li>Under machine foundation &amp; Base plates and transports rails</li> <li>Range of fixing Anchor Bolts</li> <li>Compressors, Motors, Pump sets</li> <li>Turbo generators and Diesel Generators</li> </ul> | <ul style="list-style-type: none"> <li>Ease to use, can be discharged by gravity or pumped</li> <li>Low permeability; Chlorides free</li> <li>Retraction compensated</li> <li>Non staining natural aggregate</li> <li>High level of contact with load bearing area</li> </ul> | Yield 0.012 m <sup>3</sup> / bag                                |
| <b>Euco Tremie Grout-IN</b> (25 kg)<br>Non-shrink underwater cement grout ASTM C1107   | <ul style="list-style-type: none"> <li>Underwater grouting</li> <li>Pier supports</li> <li>Underwater concrete structures</li> <li>Off-shore rigging</li> </ul>   | <ul style="list-style-type: none"> <li>Non-shrink for positive, secure support</li> <li>Anti-washout additive; No added chlorides</li> <li>Highly flowable (easy mixing &amp; pumping)</li> <li>Rapid strength gain for early support</li> </ul>                              | Yield 0.013 m <sup>3</sup> / bag                                |
| <b>Dry Pack Grout</b> (25 kg)<br>Non-shrink Structural Grout for maximum effective bearing area (EBA) ASTM C 1107 (modified)       | <ul style="list-style-type: none"> <li>Structural baseplates</li> <li>Equipment and machinery</li> <li>Precast elements</li> </ul>  | <ul style="list-style-type: none"> <li>Extremely cohesive at damp pack consistency</li> <li>Non-staining</li> <li>High compressive strengths for maximum EBA</li> <li>Non-shrink for long term support</li> </ul>   | Yield : 0.011 m <sup>3</sup> /bag                               |
| <b>Euco Cable Grout PTX</b> (25 kg)<br>High Performance Cable Grout  | <ul style="list-style-type: none"> <li>Post-tensioned cables and ducts</li> <li>Grouting of tight clearances</li> </ul>   | <ul style="list-style-type: none"> <li>Superior corrosion protection</li> <li>High fluidity for easy placement</li> <li>Non-shrink, Exceptional Strength</li> <li>Pumpable for a minimum of 2 hrs @ 32 °C</li> </ul>  | Yield 0.015 m <sup>3</sup> / bag                                |



## REPAIR & REHABILITATION

| Product (Product Description)   | Applications  | Features & Benefits  | Estimation   |
|---|---|--|--|
| <b>Cementitious grout</b>   |   |  |  |
| <b>Hi-Flow Grout</b> (25 kg)<br>High-tolerance, Heavy Duty(HD), Non-shrink Grout ASTM C1107                                     | <ul style="list-style-type: none"> <li>• HD grouting for machinery &amp; equipment</li> <li>• Structural columns, Bridge seats &amp; Crane rails</li> <li>• Bearing plates &amp; Anchorages</li> </ul>                                  | <ul style="list-style-type: none"> <li>• Non-shrink with minimum positive expansion for high-tolerance performance</li> <li>• Non-bleeding and non-segregating</li> <li>• Rapid strength gain to minimize turnaround time</li> </ul>                         | Yield : 0.013m <sup>3</sup> / bag                                      |
| <b>NC Grout</b> (25 kg)<br>Non-Corrosive, Non-Shrink Cementitious Grout ASTM C827 and ASTM C1107                                | <ul style="list-style-type: none"> <li>• Interior or exterior</li> <li>• Structural steel, Columns, Anchor bolts</li> <li>• Machinery Base Plates</li> <li>• Precast structural members</li> </ul>                                      | <ul style="list-style-type: none"> <li>• Can be used in wet areas - will not rust</li> <li>• Above or below grade</li> <li>• Versatile flow capability</li> </ul>  | Yield : 0.012m <sup>3</sup> / bag                                      |
| <b>NS Grout</b> (25 kg)<br>Non-shrink, Non-staining, Non-metallic Grout; Complies with ASTM C1107                               | <ul style="list-style-type: none"> <li>• Pumps and fans, Generators</li> <li>• Compressors &amp; motors</li> <li>• Machine bases of all types</li> <li>• Column baseplates &amp; Anchor bolts</li> </ul>                                | <ul style="list-style-type: none"> <li>• Excellent bearing</li> <li>• Compatible with galvanic anodes (Fluid)</li> <li>• Does not contain any added chloride ions</li> <li>• Outstanding strength</li> </ul>   | Yield 0.012 m <sup>3</sup> /bag, Density 2200-2300 kg/m <sup>3</sup>   |
| <b>Tamms form and pour HES-IN</b> (25 kg)<br>Flowable, Cementitious High Early strength micro concrete with corrosion inhibitor | <ul style="list-style-type: none"> <li>• Use on grade, above and below grade</li> <li>• Horizontal, Vertical &amp; overhead surfaces</li> <li>• Repair material for traffic areas</li> <li>• Compatible with galvanic anodes</li> </ul> | <ul style="list-style-type: none"> <li>• 20 mm to 150 mm depth repairs (neat grout)</li> <li>• Can be extended with pea gravel for deeper repairs</li> <li>• High bond strength &amp; Pumpable</li> <li>• High early &amp; ultimate strength gain</li> </ul> | Yield 0.012 m <sup>3</sup> /bag, Density – 2300-2400 kg/m <sup>3</sup> |

### Grouts

#### Polyester Grout

|  |  |  |           |
|--|--|--|-----------|
| <b>EucoFix NS-IN</b> (1 kg & 5 kg)<br>Non Sag Polyester Resin Grout, High Strength         | Used in overhead or horizontal holes where bar / hole relationship conforms to EUCOFIX polyester resin anchor grout SL | <ul style="list-style-type: none"> <li>• Vibration, Weather &amp; Corrosion resistant</li> <li>• Can be used in damp environment</li> <li>• Non expansive &amp; Fast cure time</li> <li>• Rapid Strength gain</li> </ul> | Refer TDS |
| <b>EucoFix SL-IN</b> (1 kg & 5 kg)<br>Self -Levelling polyester resin grout, High strength | Used where the difference between the hole diameter and bar diameter by not less than 4mm and not more than 25mm       | <ul style="list-style-type: none"> <li>• Vibration, Weather &amp; Corrosion resistant</li> <li>• Can be used in damp environment</li> <li>• Non expansive &amp; Fast cure time</li> <li>• Rapid Strength gain</li> </ul> | Refer TDS |

#### Epoxy Grout

|   |   |  |  |
|---|---|--|--|
| <b>E3-DEEP POUR</b> (Std. Unit)<br>Epoxy Grout for Deep Pour Applications with DL TECHNOLOGY™ | <ul style="list-style-type: none"> <li>• Large/deep volume precision placements</li> <li>• Tanks, turbines, housings, Rebuilding foundations, bases and columns</li> <li>• Vibration dampening for equipment</li> <li>• Pour-backs for post tension projects</li> </ul> | <ul style="list-style-type: none"> <li>• DL Technology™ aggregate greatly reduces dust</li> <li>• Low exotherm (large volume area)</li> <li>• High chemical resistance, Stable in deep placements</li> <li>• Excellent bearing, Expansive/non-shrink</li> <li>• Excellent bond foundation to base plate</li> </ul> | Standard Unit: 0.039 m <sup>3</sup> /unit<br>High Flow Mix: 0.033 m <sup>3</sup> /unit |
| <b>E3-FLOWABLE</b> (Std. Unit)<br>High-Flow Epoxy Grout with DL TECHNOLOGY™                   | <ul style="list-style-type: none"> <li>• For Large plates precision grouting</li> <li>• Machinery or structural elements</li> <li>• Rail grouting, keyways, anchor bolts &amp; inverted baseplates</li> </ul>   | <ul style="list-style-type: none"> <li>• DL Technology™ aggregate greatly reduces dust</li> <li>• Excellent bearing &amp; bond machinery to foundation</li> <li>• High chemical resistance</li> <li>• Exceptional flexural &amp; tensile strength</li> </ul>   | Yield : 0.0084 m <sup>3</sup> /unit  |
| <b>E3G-IN</b> (27.2 kg)<br>High Strength, Low Exothermic Epoxy Grout                          | <ul style="list-style-type: none"> <li>• Turbines, pumps, compressors and fans</li> <li>• Deep fill machine bases</li> <li>• High strength applications (crane rails)</li> <li>• Pour-backs for post tension projects</li> </ul>  | <ul style="list-style-type: none"> <li>• Fast setting; High chemical resistance</li> <li>• Excellent bearing; Low creep Characteristics</li> <li>• Excellent bond foundation to base plate</li> <li>• Stable in deep or thick sections</li> </ul>  | Covers 0.55 m <sup>2</sup> at a depth of 25 mm density 1950 kg/m <sup>3</sup>          |

## REPAIR & REHABILITATION



| Product (Product Description)  | Applications  | Features & Benefits   | Estimation |
|--|---|---|------------|
| <b>Urethane – Chemical Grouts</b>  |   |   |            |
| <b>Dural Aqua-Dam</b> (22 kg)<br>Hydrophobic Polyurethane Grout<br>(ANSI/NSF 61) | <ul style="list-style-type: none"> <li>Leaking cracks and joints</li> <li>Mines &amp; tunnels; Sewers &amp; manholes</li> <li>Water &amp; waste water treatment facilities</li> <li>Below grade walls subject to high water tables</li> </ul> | <ul style="list-style-type: none"> <li>Bonds to wet and dry substrates</li> <li>Fast reaction time with added accelerator</li> <li>Remains active when the water subsides, React to water &amp; Cure</li> <li>Excellent elongation (for moving cracks &amp; joints)</li> </ul>                            | Refer TDS  |
| <b>Dural Aqua-Fil</b> (20 & 200 kg)<br>Hydrophilic Polyurethane Grout            | <ul style="list-style-type: none"> <li>Leaking cracks and joints</li> <li>Mines &amp; tunnels; Sewers &amp; manholes</li> <li>Water &amp; waste water treatment facilities</li> <li>Below grade walls subject to high water tables</li> </ul> | <ul style="list-style-type: none"> <li>Tenacious bond to wet &amp; dry substrates</li> <li>Seeks out water within the crack &amp; its fissures</li> <li>Excellent elongation to handle cracks and joints</li> <li>Can seal small and large cracks within concrete and other natural substrates</li> </ul> | Refer TDS  |

| <b>Concrete Repair</b>  |  |   |   |
|---|--|---|---|
| <b>INCRETE Renovate</b> (15 kg)<br>Two-component, polymer-modified cementitious concrete resurfacer                         | <ul style="list-style-type: none"> <li>Resurfacing stamped concrete stairs</li> <li>New canvas for decorative concrete</li> <li>Covering dull, stained or weathered concrete</li> </ul>  | <ul style="list-style-type: none"> <li>Retains texture of stamped concrete</li> <li>Integrally colored using INCRETE COLOR PACKS</li> <li>Easy to clean and maintain surface</li> <li>Extremely tough, durable, wear-bearing surface</li> </ul>   | By roller applied - 6.9 to 9.3 m <sup>2</sup><br>By spray applied - 14 to 18.5 m <sup>2</sup> |
| <b>Thin Crete</b> (22.7 kg)<br>Stamped concrete overlay system designed as a cover-up for existing concrete surfaces        | <ul style="list-style-type: none"> <li>Driveways &amp; walkways</li> <li>Entrance</li> <li>Plazas, Decking</li> <li>Landscaping</li> </ul>   | <ul style="list-style-type: none"> <li>Unique decorative concrete resurfacing system</li> <li>Wide array of textures &amp; Patterns</li> <li>Eliminates costly concrete replacement</li> <li>ANSI tested over waterproof membrane</li> <li>Excellent adhesion to old or new concrete</li> </ul> | 2.32 m <sup>2</sup> @ 6.3 mm &<br>1.39 m <sup>2</sup> @ 9 mm                                  |
| <b>INCRETE SPRAY-DECK GROUT</b> (22.7 kg)<br>Textured decorative concrete overlay system                                    | <ul style="list-style-type: none"> <li>Pool &amp; patio decks; Plazas; Walkways</li> <li>Shopping centers &amp; Retail floors</li> <li>Residential and commercial entrances</li> <li>Horizontal and Vertical applications</li> </ul> | <ul style="list-style-type: none"> <li>Non-slip, beautifully-textured surface</li> <li>May be integrally colored or sealed with INCRETE CONCRETE STAIN SEALER</li> <li>Durable surface that is easy to clean</li> </ul>   | 6.96 m <sup>2</sup> for a skim coat<br>13.0 m <sup>2</sup> for a texture coat                 |
| <b>Concrete Top-Supreme</b> (25 kg)<br>Single component, Latex & microsilica modified, Cementitious topping & Repair mortar | <ul style="list-style-type: none"> <li>Parking decks &amp; Ramps</li> <li>Pavements</li> <li>Warehouse &amp; Light Industrial floors</li> <li>Shoulder repairs</li> </ul>  | <ul style="list-style-type: none"> <li>Provides a strong, wear resistant overlay</li> <li>Contains an integral corrosion inhibitor</li> <li>Excellent bond to properly prepared sound concrete</li> <li>Compatible to galvanic anodes</li> </ul>  | Yield : 0.011 m <sup>3</sup> / bag  |
| <b>Thin-Top Supreme</b> (25 kg)<br>Premium Polymer & Microsilica Modified Repair & Overlay Mortar for thin applications     | <ul style="list-style-type: none"> <li>Parking decks, Pavements and Joints</li> <li>Marine structures</li> <li>Curbs and gutters</li> <li>Ramps and Floors; Walkways</li> </ul>  | <ul style="list-style-type: none"> <li>Provides a strong, wear resistant overlay</li> <li>Contains an integral corrosion inhibitor</li> <li>Reduce the penetration of water and de-icing salts</li> <li>Excellent durability in freeze-thaw cycles</li> </ul>                                   | Yield: 0.012 m <sup>3</sup> / bag   |



## REPAIR & REHABILITATION

| Product (Product Description)   | Applications   | Features & Benefits  | Estimation   |
|---|--|--|--|
| <b>Concrete Repair</b>  |  |  |  |
| <b>Euco Re-Cover</b> (18 kg)<br>Polymer modified, Fiber-Reinforced Concrete Resurfacer                        | <ul style="list-style-type: none"> <li>• Driveways, Sidewalks &amp; Pool decks</li> <li>• Garage floors</li> <li>• Elevated slabs</li> <li>• Vertical concrete surfaces</li> </ul>   | <ul style="list-style-type: none"> <li>• Excellent working time</li> <li>• Micro-fiber reinforced &amp; Polymer modified</li> <li>• Open to foot traffic(4 hrs), rubber tire traffic(12 hrs)</li> <li>• Suitable for freeze-thaw environments</li> </ul>                   | 8.6 m <sup>2</sup> /bag<br>@1.6 mm Thickness                   |
| <b>Eucocrete</b> (25 kg)<br>High-Performance Concrete with Corrosion Inhibitor                                | <ul style="list-style-type: none"> <li>• Parking decks, Balconies &amp; Joint repairs</li> <li>• Equipment bases; Beams</li> <li>• Floor toppings &amp; Pavements</li> <li>• Vertical/Overhead Form &amp; pour jobs</li> </ul>             | <ul style="list-style-type: none"> <li>• Microsilica modified for high strength</li> <li>• Low permeability (excellent freeze-thaw resistance)</li> <li>• Compatible with galvanic anodes</li> <li>• Pre-mixed with pea gravel, Ready to use</li> </ul>                    | 0.42 m <sup>2</sup> /bag<br>@2.5 cm thickness                  |
| <b>Tamms Form and Pour</b> (25 kg)<br>Flowable, Shrinkage Compensated Micro-concrete with corrosion inhibitor | <ul style="list-style-type: none"> <li>• Use on grade, above and below grade</li> <li>• Horizontal, vertical &amp; overhead applications</li> <li>• Repair material for traffic areas</li> <li>• Filler for voids and cavities</li> </ul>  | <ul style="list-style-type: none"> <li>• 20 mm to 75 mm depth repairs (neat)</li> <li>• Extended with pea gravel for deeper repairs.</li> <li>• Silica fume enhanced</li> <li>• Pumpable &amp; High bond strength properties</li> </ul>                                    | Yield : 0.013 m <sup>3</sup> /bag                              |
| <b>Tamms Thin Patch</b> (25 kg)<br>Polymer-Modified, Multi-Use Repair Mortar                                  | <ul style="list-style-type: none"> <li>• Horizontal, vertical or overhead repairs</li> <li>• Interior and exterior use</li> <li>• Fill small holes, honeycomb &amp; spalled areas</li> <li>• Re-point mortar joints</li> </ul>             | <ul style="list-style-type: none"> <li>• Single-component</li> <li>• Trowelable repair mortar</li> <li>• Long-term durability</li> <li>• Outstanding bond strength</li> </ul>  | 1.78 m <sup>2</sup> /bag<br>@6.3 mm thickness                  |
| <b>Tammspatch II</b> (25 kg)<br>Two-Component Cementitious Repair Mortar and Underlayment                     | <ul style="list-style-type: none"> <li>• Resurfacing worn concrete walkways</li> <li>• Decorative overlays &amp; Flowable underlays</li> <li>• Horizontal or vertical repairs</li> <li>• Pointing mortar joints</li> </ul>                 | <ul style="list-style-type: none"> <li>• Featheredge to 25 mm per lift neat, 60 mm if extended</li> <li>• Highly durable</li> <li>• Outstanding bond strength</li> <li>• High strength</li> </ul>  | Yield : 0.011m <sup>3</sup> /bag                               |
| <b>VersaSpeed LS 100-IN</b> (25 kg)<br>Rapid Hardening, Horizontal Repair Mortar with Extended Working Time   | <ul style="list-style-type: none"> <li>• Industrial/Commercial floors; Pavement</li> <li>• Bridges, Roads, Highways</li> <li>• Loading dock, Parking deck &amp; Ramps</li> <li>• Vertical/overhead form &amp; pour applications</li> </ul> | <ul style="list-style-type: none"> <li>• Open to light duty traffic at 4 hours</li> <li>• Coat with epoxy after 5 hours</li> <li>• Micro-fiber reinforced; Shrinkage compensated</li> <li>• Can be placed up to 50 mm neat</li> </ul>                                      | Yield : 0.012m <sup>3</sup> / bag                              |
| <b>Speed Plug</b> (5& 25 kg)<br>Rapid Setting Hydraulic Cement  | <ul style="list-style-type: none"> <li>• Concrete and masonry walls and floors</li> <li>• Dams &amp; Reservoirs</li> <li>• Swimming pools, cisterns, water tanks and manhole repairs</li> </ul>  | <ul style="list-style-type: none"> <li>• Non-shrinking, non-metallic and non-corrosive</li> <li>• Initial set in 1 to 3 minutes</li> <li>• Stops running water or seepage leaks</li> <li>• Can be applied underwater</li> </ul>  | Depending on the size of water leak, approx. 0.3 kg/water leak |
| <b>Euco QWIK stitch</b> (0.7L)<br>Rapid-Setting Urethane Crack & Spall Repair                                 | <ul style="list-style-type: none"> <li>• Cracked concrete surfaces</li> <li>• Interior and exterior</li> <li>• Spalled floor joints</li> <li>• Repair of pop-outs &amp; delaminations on floors</li> </ul>                                 | <ul style="list-style-type: none"> <li>• Can be applied at a range of thicknesses with the use of clean, oven-dried silica</li> <li>• Very fast cure time; Low VOC</li> <li>• Low viscosity - deep penetration into cracks</li> </ul>                                      | Yield : 590 cm <sup>3</sup> /cartridge                         |
| <b>Eucopatch</b> (25 kg)<br>Single-Component, Rapid-Setting Repair Material                                   | <ul style="list-style-type: none"> <li>• Walls &amp; Columns</li> <li>• Curbs and gutters</li> <li>• Precast panels; Overhead patching</li> <li>• Masonry units</li> </ul>   | <ul style="list-style-type: none"> <li>• Rapid-setting for repairs up to 10 cm</li> <li>• Overhead patching</li> <li>• High compressive strength</li> <li>• Resistance to freeze-thaw cycles and de-icing salts</li> </ul>   | 1.2 m2/bag<br>@13mm thickness                                  |
| <b>EucoRepair V100-IN</b> (25 kg)<br>Single-Component, Low Shrinkage, Vertical/Overhead Repair Mortar         | <ul style="list-style-type: none"> <li>• Resurfacing ,vertical &amp; overhead repairs</li> <li>• Marine structures, tunnels and dams</li> <li>• Parking structures &amp; bridges</li> <li>• Above and below grade applications</li> </ul>  | <ul style="list-style-type: none"> <li>• Polymer modified with fiber reinforcement</li> <li>• Contains an integral corrosion inhibitor</li> <li>• Low permeability helps protect rebar from corrosion</li> <li>• High bond strength provides excellent adhesion</li> </ul> | Yield : 0.013m <sup>3</sup> /bag                               |
| <b>Eucoshot</b> (25 kg)<br>Single-component,Silica Fume Modified Shotcrete Mix                                | <ul style="list-style-type: none"> <li>• Shotcrete projects; Retaining walls</li> <li>• Parking decks /Piers/docks</li> <li>• Marine environments / Dams/Tunnels</li> <li>• Mining applications, Bridges Structures</li> </ul>             | <ul style="list-style-type: none"> <li>• Corrosion protection-Rebar &amp; Weld Wire Mesh</li> <li>• Low chloride salt permeability</li> <li>• Low shrinkage &amp; High abrasion resistance</li> <li>• Excellent freeze-thaw resistance</li> </ul>                          | Yield : 0.012 m <sup>3</sup> /bag                              |

## REPAIR & REHABILITATION

| Product (Product Description)  | Applications  | Features & Benefits  | Estimation   |
|--|---|--|--|
| <b>Concrete Repair</b>   |   |  |  |
| <b>Tamms Cement Wash</b> (25 kg)<br>Single-component, Polymer-Modified, Cementitious Vertical Finishing Material                 | <ul style="list-style-type: none"> <li>For filling bugholes - interior, exterior, vertical or overhead surfaces</li> <li>Finishing newly cast concrete surfaces with imperfections</li> </ul>                                       | <ul style="list-style-type: none"> <li>Rapid setting</li> <li>Trowels very easily</li> <li>Superior adhesion and durability</li> <li>Has no added gypsum</li> </ul>  | Yield 0.01 m <sup>3</sup> /bag, remove 0.012 m <sup>3</sup> /bag |
| <b>Tamms Structural Mortar</b> (25 kg)<br>Single-component, Fiber-Enhanced, Low Pressure Spray Repair Mortar                     | <ul style="list-style-type: none"> <li>Vertical and overhead concrete repairs</li> <li>Bridge, parking garages and tunnels</li> <li>Compatible with galvanic anodes</li> <li>Manholes, dams &amp; waste water structures</li> </ul> | <ul style="list-style-type: none"> <li>Low pressure spray or trowel applied</li> <li>Micro-fiber, Silica fume and polymer enhanced</li> <li>10mm to 50mm applications</li> <li>Contains a migratory corrosion inhibitor</li> </ul>   | Yield : 0.012 m <sup>3</sup> / per bag                           |
| <b>Tammscrete</b> (25 kg)<br>Polymer-Modified, Cementitious Finishing Material   | <ul style="list-style-type: none"> <li>Fill bug holes and honeycombs</li> <li>Brighten and restore vertical/overhead concrete surfaces</li> <li>Skimcoats</li> </ul>  | <ul style="list-style-type: none"> <li>Featheredge to 3.0, 6.0 mm when extended with sand</li> <li>Smooth, creamy consistency</li> <li>Low shrinkage</li> <li>Long working time</li> </ul>   | Yield : 0.012m <sup>3</sup> / per bag                            |
| <b>Verticoat</b> (30 kg)<br>Two-Component, Trowel Grade Vertical/Overhead Concrete Repair Mortar ASTM C 1059-91, Type II systems | <ul style="list-style-type: none"> <li>Vertical and overhead repairing of scaled and spalled concrete</li> <li>Repair of honeycombed surfaces</li> <li>Parking structures &amp; bridges</li> </ul>                                  | <ul style="list-style-type: none"> <li>Fast setting for rapid repairs up to 10 cm</li> <li>High compressive strengths</li> <li>Suitable for both interior and exterior applications</li> <li>Excellent bond to sound concrete</li> </ul>   | Yield : 0.014 m <sup>3</sup> / per bag                           |
| <b>Sentinel Galvanic Anodes</b> (10 units)<br>Self-Generating Cathodic Protection ASTM B 418 Type II                             | <ul style="list-style-type: none"> <li>Parking structures</li> <li>Bridges</li> <li>Pier &amp; dock supports</li> <li>Balconies</li> </ul>  | <ul style="list-style-type: none"> <li>Protective, current output of any cathodic protection device.</li> <li>Unique v-notch design snugly fits any size rebar</li> <li>Beneficial protective current for 10 to 20 years*</li> <li>Galvanized tie wire (not rust &amp; mounts to rebar)</li> </ul> | —  |

| <b>Coatings</b>  |   |  |  |
|--|---|--|--|
| <b>Euco Zinc Primer-IN</b> (5 kg)<br>Two-component, Metallic Epoxy Zinc primer               | <ul style="list-style-type: none"> <li>Repair or coating system for structures in aggressive environments</li> <li>Offshore facilities, petrochemical plants</li> <li>Pulp and Paper mills, Bridges, Power plants</li> <li>Marine structures</li> </ul>                                       | <ul style="list-style-type: none"> <li>High coverage rate; Touch dry within 20 - 45 minutes</li> <li>Excellent Adhesion &amp; Bond strength (cementitious system); Long pot life</li> <li>Active 'Zinc-rich' system prevents corrosion by electro chemical means</li> </ul>                                  | 3.5 - 4.5 m <sup>2</sup> /kg /coat   |
| <b>Super-Wall Pro</b> (25 kg)<br>High Build elastomeric wall coating                         | <ul style="list-style-type: none"> <li>Masonry, Stone, Concrete, Plaster, Stucco</li> <li>Metal &amp; Exterior wall surfaces</li> <li>Above grade exterior insulating finishing systems</li> </ul>  | <ul style="list-style-type: none"> <li>Beautifies &amp; protects walls of all types</li> <li>Elastomeric for excellent resistance to movement; UV stable</li> <li>Reinforced with high strength fibres</li> <li>Provides a completely waterproof veneer</li> <li>Excellent weathering resistance</li> </ul>  | 2.3- 2.7 m <sup>2</sup> /kg /2coats  |
| <b>Tamms H/P Primer</b> (20 & 210 kg)<br>Primer for concrete or masonry surfaces             | <ul style="list-style-type: none"> <li>Exterior/interior, above/below grade</li> <li>Concrete &amp; masonry surfaces</li> <li>Concrete block surfaces such as split face, textured, regular or lightweight block</li> <li>Precast, textured, lightweight and formed concrete</li> </ul>       | <ul style="list-style-type: none"> <li>Provides a stable base for Euclid Chemical coatings</li> <li>Aids in achieving appropriate coverage rates for subsequent coatings</li> <li>Dries rapidly to create a breathable barrier within the substrate surface.</li> </ul>                                      | Porus surface - 2.5-3.7 m <sup>2</sup> /kg<br>Non-porus surface - 4.9-7.3 m <sup>2</sup> /kg |
| <b>Tammsflex Primer-IN</b> (250 ml)<br>Colourless solvent based, Polysulphide sealant primer | <ul style="list-style-type: none"> <li>Primer for polysulphide-based joint sealants subjected to stresses and movements or cyclical conditions</li> <li>Treatment for porous surfaces to reduce surface porosity and avoid pin holing and bubbling in polysulphide sealant systems</li> </ul> | <ul style="list-style-type: none"> <li>Beautifies &amp; protects walls of all types</li> <li>Elastomeric for excellent resistance to movement; UV stable;</li> <li>Reinforced with high strength fibres</li> <li>Provides a completely waterproof veneer</li> <li>Excellent weathering resistance</li> </ul> | 0.75-0.90 m <sup>2</sup> /pack   |

## REPAIR & REHABILITATION

| Product (Product Description)   | Applications   | Features & Benefits  | Estimation  |
|---|--|--|---|
| <b>Coatings</b>   |  |  |   |
| <b>Tamms Masonry Primer</b><br>(5 & 25 kg)<br>Water based, 100% Acrylic resin emulsion block filler   | <ul style="list-style-type: none"> <li>• Brick &amp; Block</li> <li>• Stone &amp; Stucco surfaces</li> <li>• Interior /Exterior &amp; Below -grade &amp; Above grade applications</li> </ul>             | <ul style="list-style-type: none"> <li>• Fills pores</li> <li>• Breathable</li> <li>• Provides a stable base for subsequent coatings</li> </ul>  | 0.7 -1.4 m <sup>2</sup> /kg   |
| <b>Tamms Stucco finish</b> (25 kg)<br>Weatherproof Decorative cementitious coatings ASTM C926   | <ul style="list-style-type: none"> <li>• Formed or precast concrete</li> <li>• Masonry, Stone, Brick</li> <li>• Commercial buildings</li> <li>• Residential</li> </ul>                                   | <ul style="list-style-type: none"> <li>• Weatherproof and decorate concrete and masonry</li> <li>• Mixes easily with potable water</li> <li>• Consistent color finish</li> <li>• Excellent adhesion</li> <li>• Highly durable</li> </ul>                     | 3.8 m <sup>2</sup> /bag @3 mm thick   |
| <b>Flexolith Summer Grade</b><br>(5, 20 kg)<br>Low Modulus Epoxy Binder For Polymer Overlays<br>ASTM C881-99, Type III, Grade 1 Class A & B | <ul style="list-style-type: none"> <li>• Parking decks</li> <li>• Bridges</li> <li>• Factories, Warehouses &amp; Loading docks</li> <li>• Nosing repair applications</li> </ul>                          | <ul style="list-style-type: none"> <li>• Ample working time in warmer climates</li> <li>• Easy to use</li> <li>• Can be used as a mortar or broadcast system</li> <li>• Mechanical &amp; thermal resistance</li> </ul>                                       | 0.98-1.23 m <sup>2</sup> /kg/coat   |
| <b>Renovate</b> (11.3 kg)<br>Two-component, Polymer modified, Cementitious Coating  | <ul style="list-style-type: none"> <li>• Resurfacing stamped concrete</li> <li>• Stairs</li> <li>• New canvas for decorative concrete</li> <li>• Covering dull, stained or weathered concrete</li> </ul> | <ul style="list-style-type: none"> <li>• Retains texture of stamped concrete</li> <li>• Extremely tough, durable, wear-bearing surface</li> <li>• Easy to clean and apply</li> <li>• Flexibility of application allows for a multitude of effects</li> </ul> | Roller applied - 6.9 to 9.3 m <sup>2</sup> /kit<br>Spray applied - 14 to 18.5 m <sup>2</sup> /kit |

For complete and full details please refer the respective product data sheets. Product guide indicates coverage value for guideline purpose.



Sentinel Galvanic Anode

Horizontal Repair

# Tremco Construction Products Group, India



## Concrete Admixtures

High performance (Accelguard, Plastol & Eucon brands) and specialty admixtures to provide highly durable & predictable concrete.



## Bonding Agents

Epoxy Adhesives and other polymer bonding agents in low and high modulus variations with varied viscosities to ensure proper bonding.



## Concrete Repair

A range of repair products including patch repair, form & pour and resurfacing solutions for vertical, overhead, horizontal and underwater applications



## Grouts & Joint Fillers

Grouts to provide essential bearing and support for and joint fillers to prevent the break down of joint edges.



## Industrial Flooring

Range of resin flooring systems offer highly resilient & durable surfaces, suited for the challenging conditions of most of the industrial sector.



## Deck Membranes

Deckshield car park systems enhance visual appearance, improve light reflectivity, prevent water ingress & promote safety for any car park.



## Roofing

A range of high-performance roofing solutions to cater extreme weather and has numerous refurbishment options for all buildings.



## Glazing

Close to 20,000 gasket profiles are available along with structural silicone sealants, glazing tapes weather sealants and other ancillary products



## Fiber Reinforcement

Tuf-Strand SF for composite steel deck construction, replacement of limited structural steel in Precast, Pavements, slab on ground, & Shotcrete applications.



## Cure & Seal

Curing and sealing line includes solvent-based products, exempt solvent-based products for VOC- egulated areas, as well as water-based, low-odor products.



## Mining & Tunneling

Pre-cast segments, cast-in-place concrete, and shotcrete products designed for underground construction.



## Decorative Concrete

Stamped or stained concrete solutions designed to replicate the natural patterns and textures found in nature.



## Decorative Commercial Flooring

Highly durable floor finishes by combining world-class design & superior aesthetics with high performance standards for all commercial venues & Institutional facilities.



## Levelling Compounds

variety of heavy-duty, self-smoothing, fast drying surface underlayment, surface treatments and DPMs.



## Waterproofing

Coatings, crystalline treatments, and chemical grouts to prevent the passing of water through concrete surfaces (for any building and infrastructure applications).



## External insulation

Exterior Cladding, Energy Efficiency, Continuous Insulation, Air and Weather Barriers, Pannelization, Brick Veneer, and Exterior Cladding Renovation